

**Création d'une Résidence Séniors  
intergénérationnelle et  
d'une salle communale**

Lieu-dit Le Martinon  
Viriville, 38980  
Parcelles Section AD n°409, 553

Maître d'Ouvrage



HABITAT DAUPHINOIS  
24 rue Balzac  
Valence 26000

Atelier d'Architecture

Jean François BENOIT & Associés

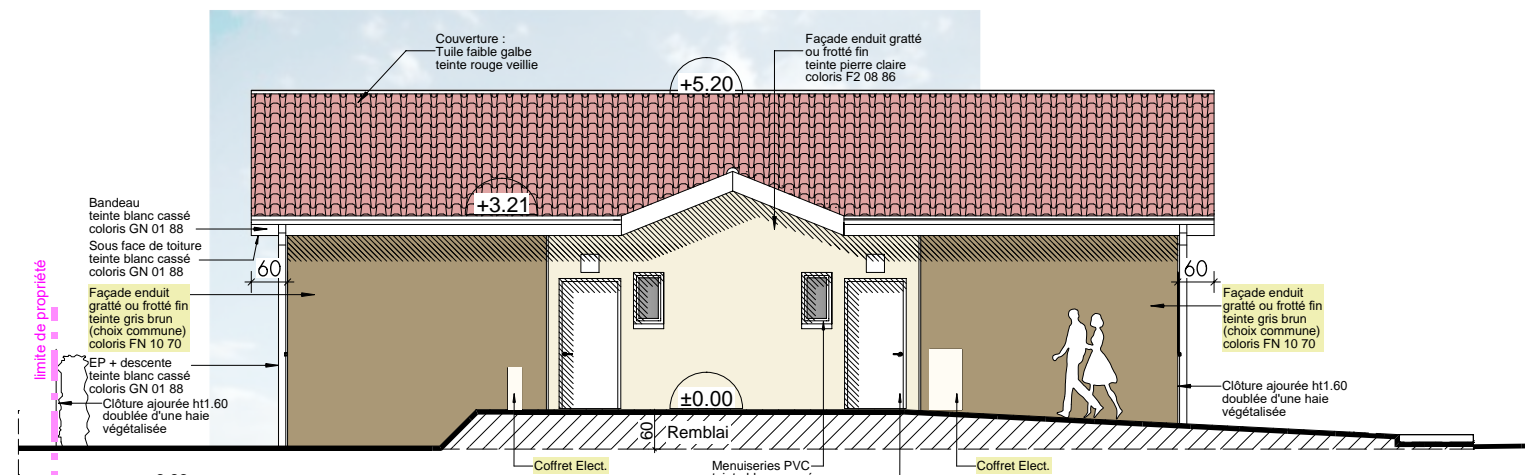
Conception & réalisations architecturales

22 rue Paul Helbronner  
38100 GRENOBLE  
04 76 09 43 43  
contact@benoit-architecte.fr  
www.benoit-architecte.fr

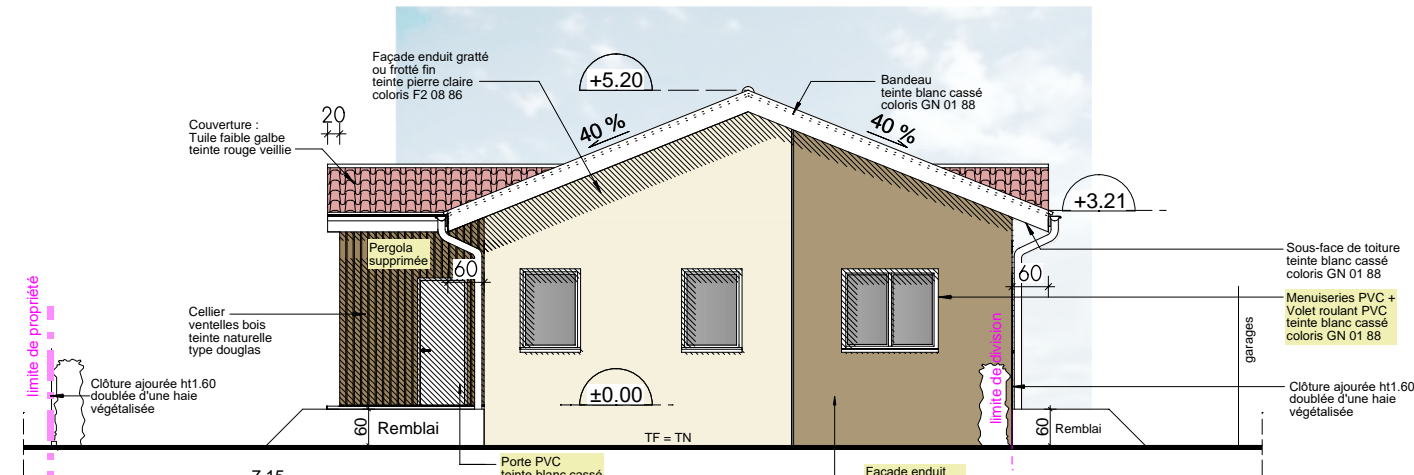
**Permis de construire Modificatif  
PCM5  
Plan de toiture**

Echelle :	Modifications :
1/250	
Dessiné le :	
19/12/2025	
Jean-François BENOIT, Architecte D.P.L.G. Architecte Conseiller auprès du CAUE de l'Isère.	
A - 22-08 - 21	

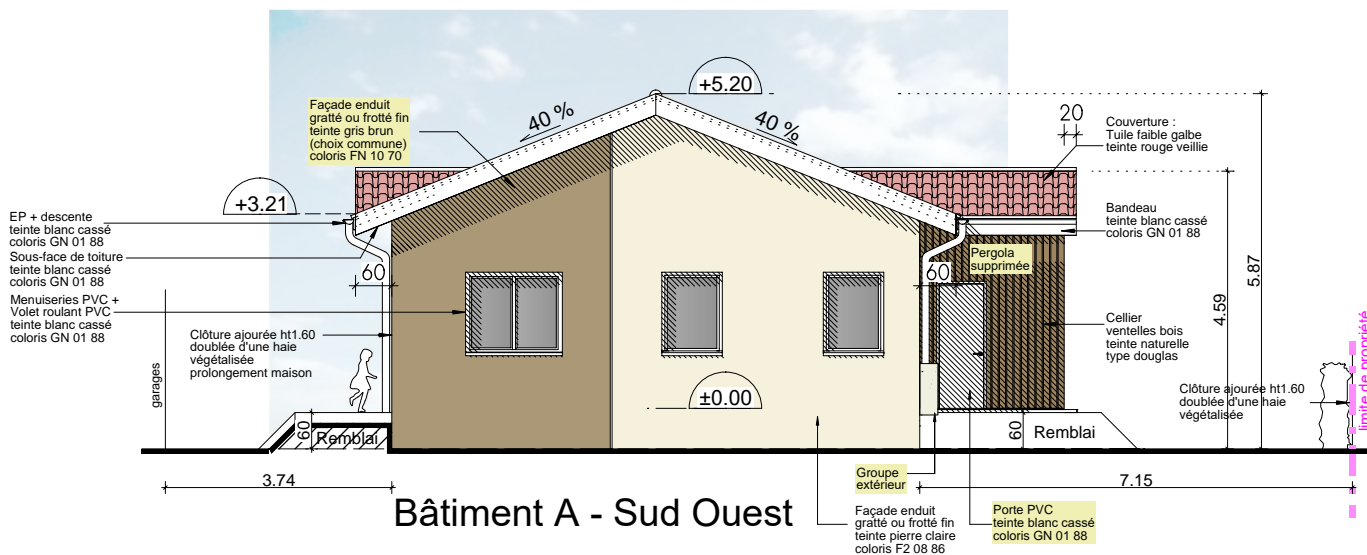




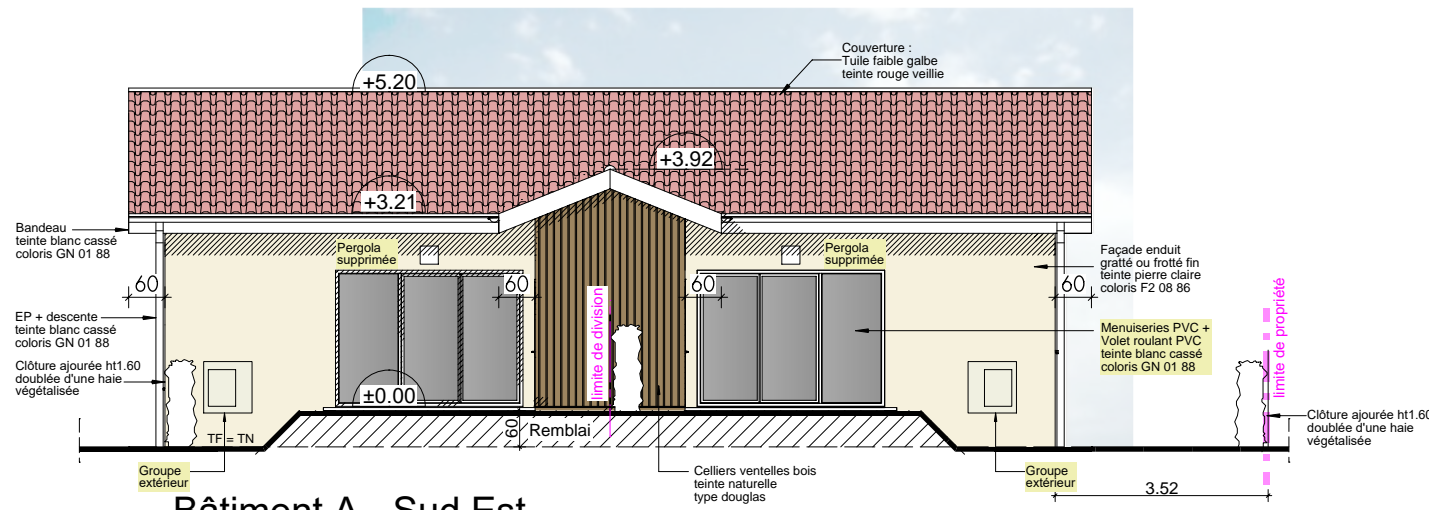
Bâtiment A - Nord ouest



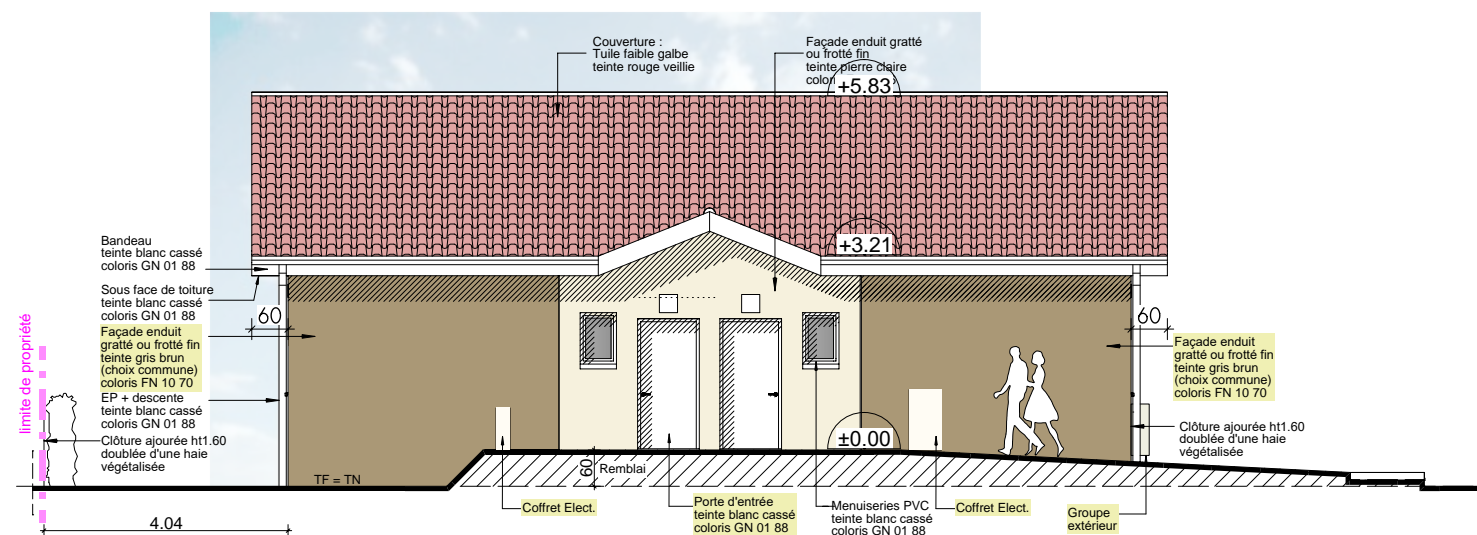
Bâtiment A - Nord Est



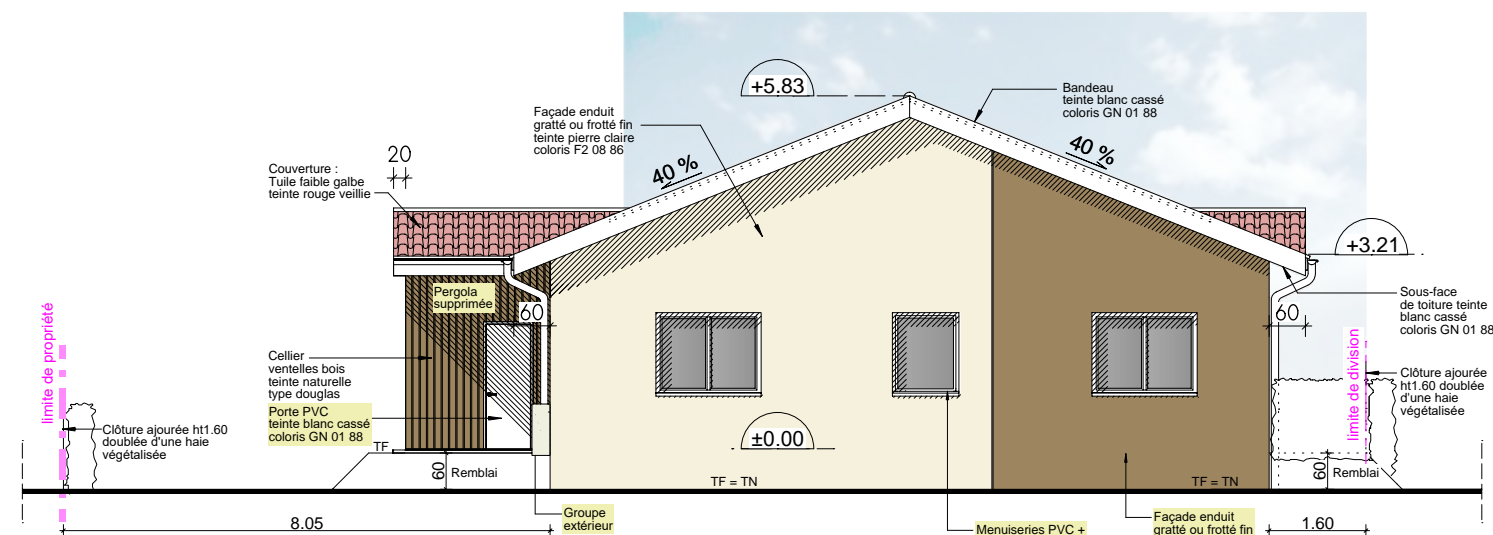
Bâtiment A - Sud Ouest



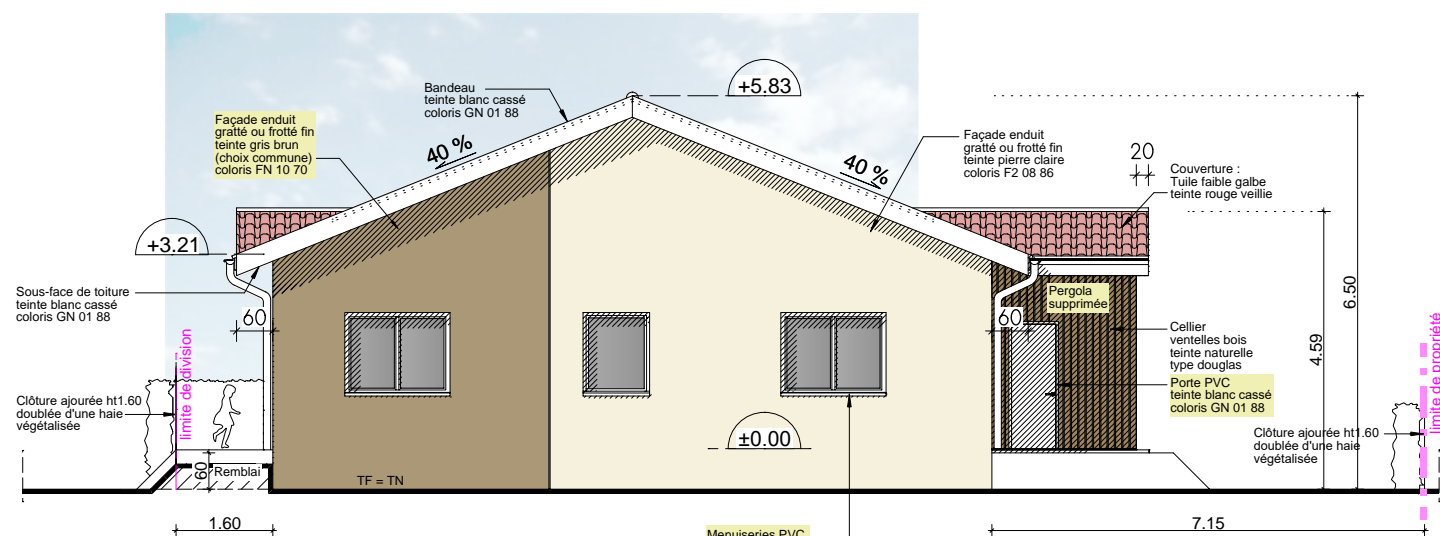
Bâtiment A - Sud Est



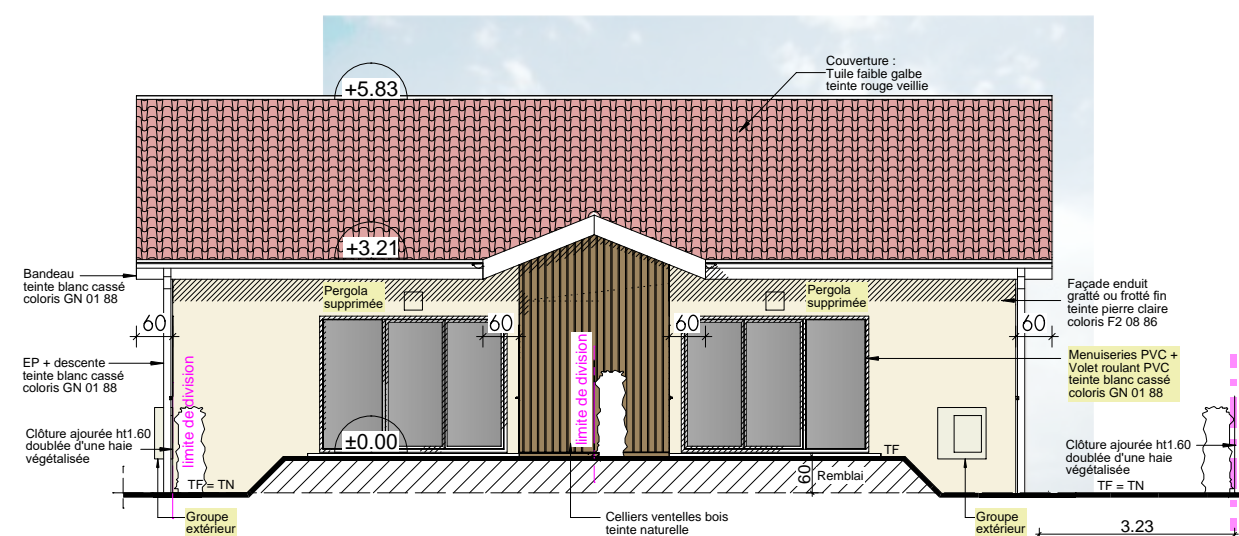
Bâtiment B - Nord ouest



Bâtiment B - Nord Est

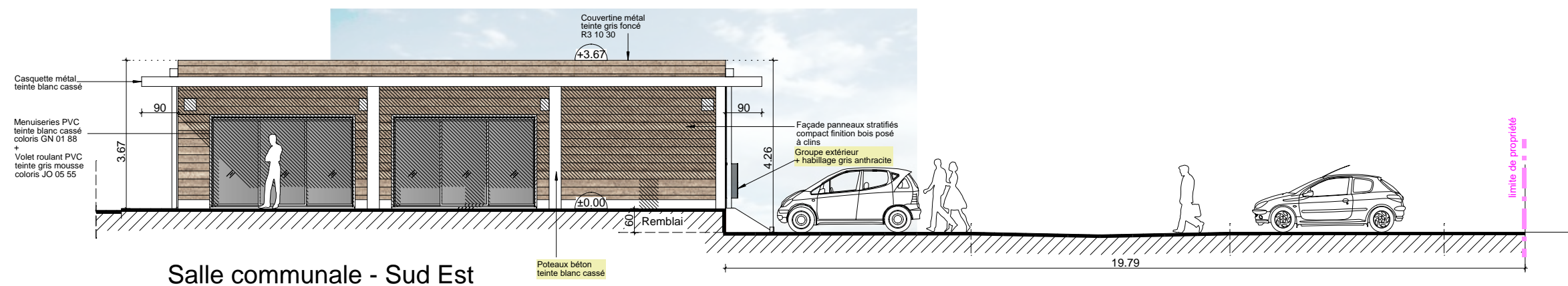


Bâtiment B - Sud Ouest

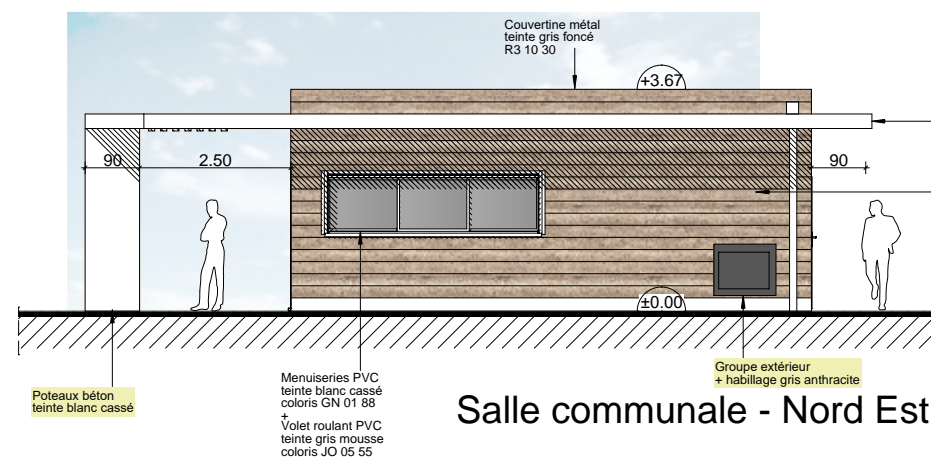


Bâtiment B - Sud Est

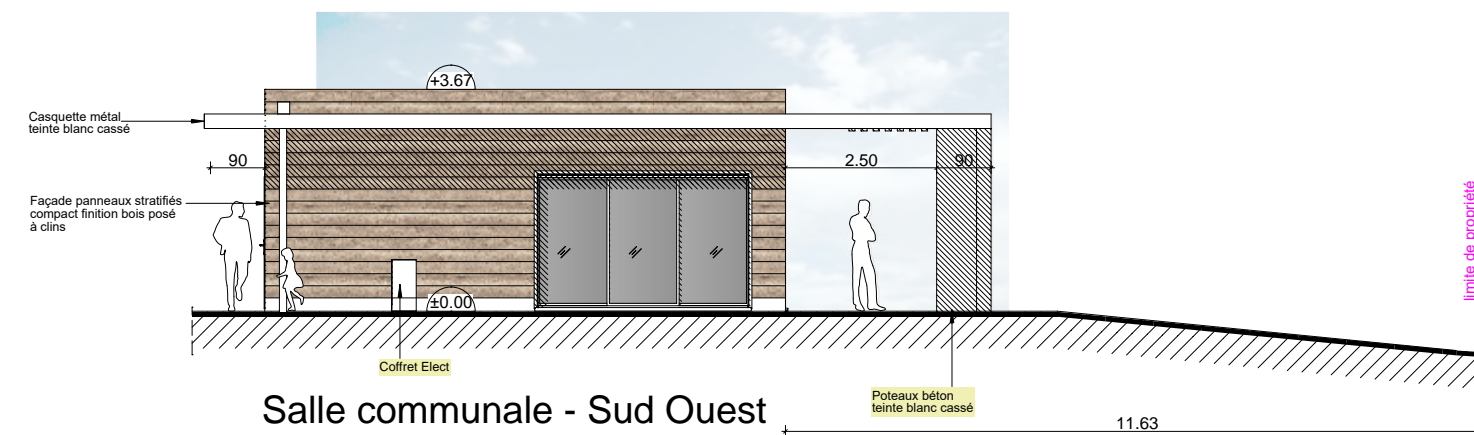




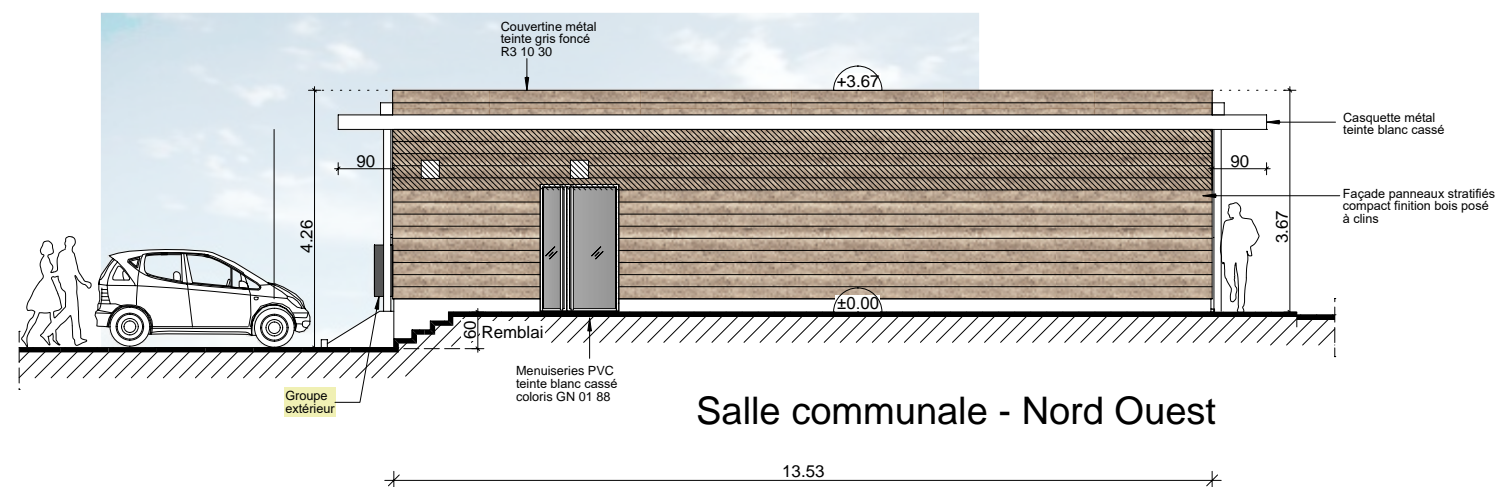
Salle communale - Sud Est



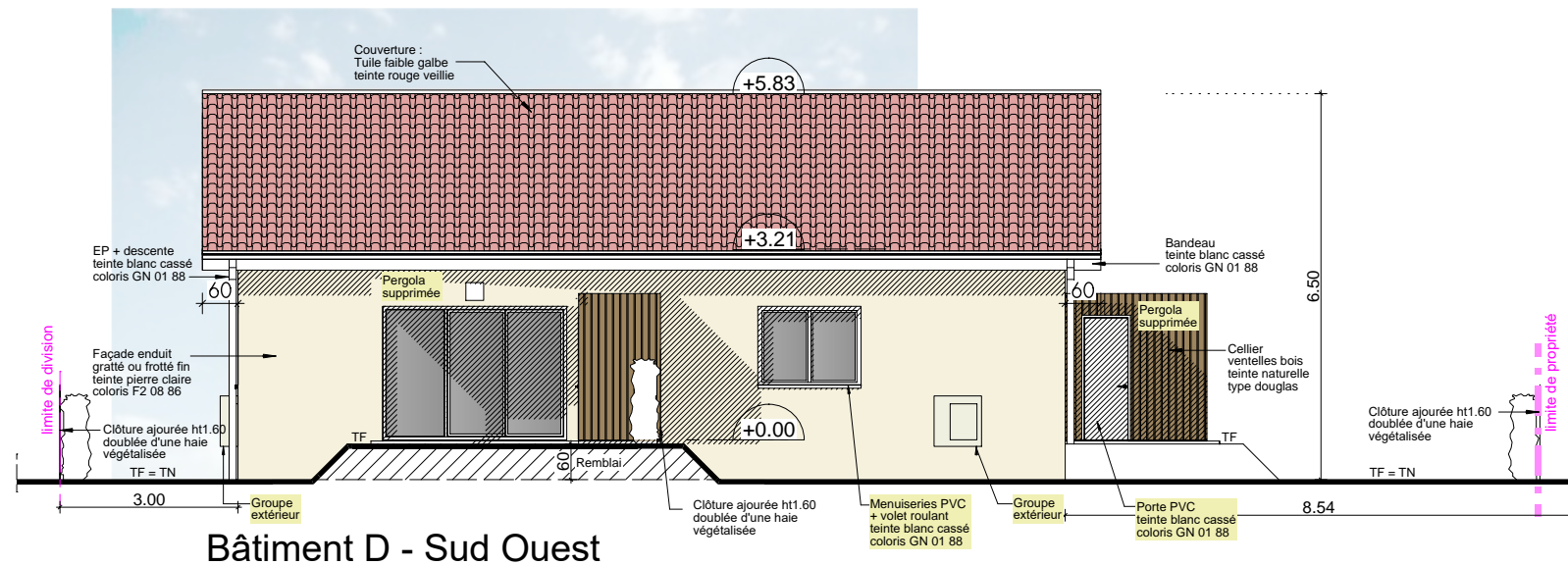
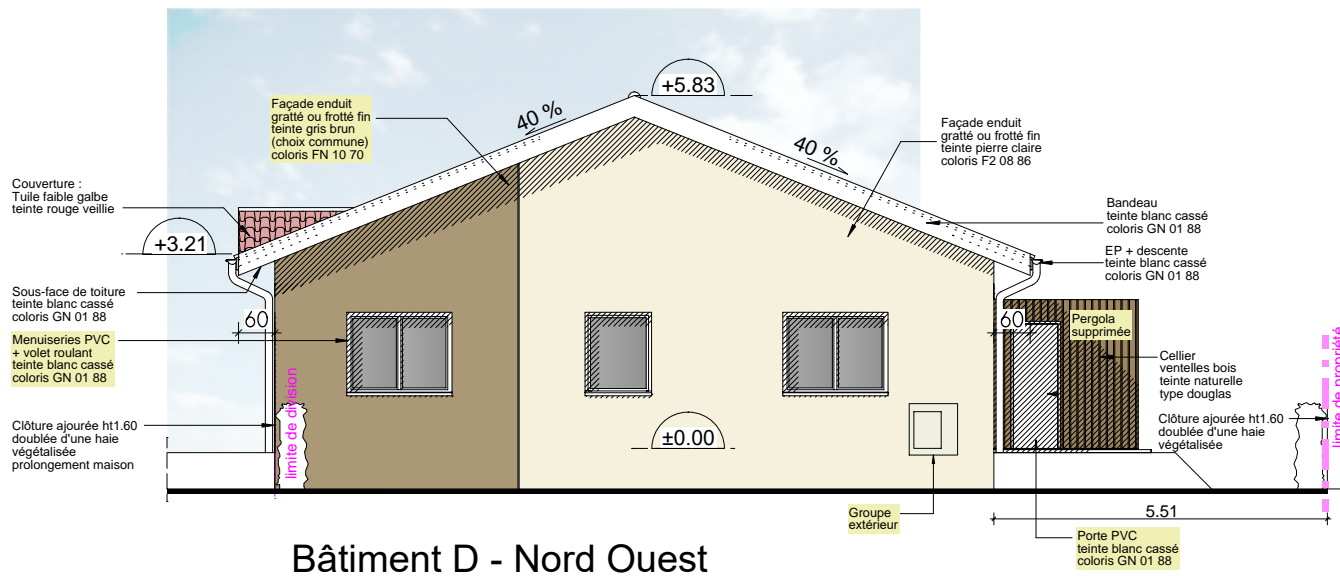
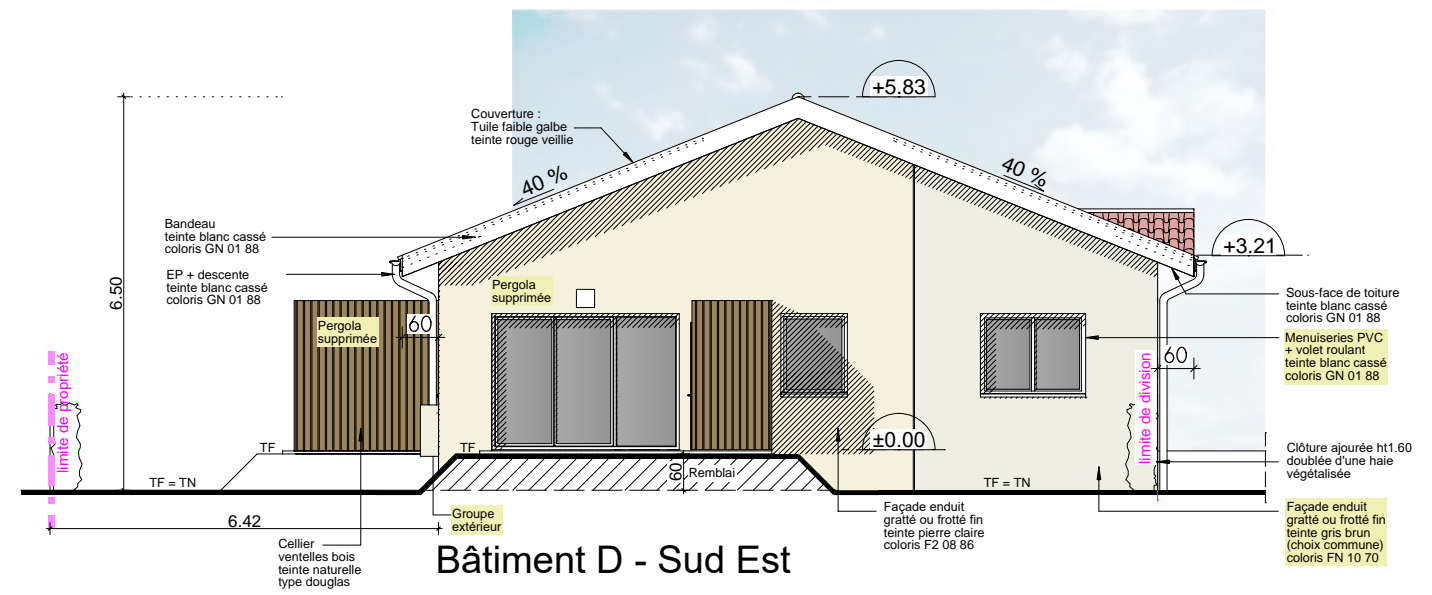
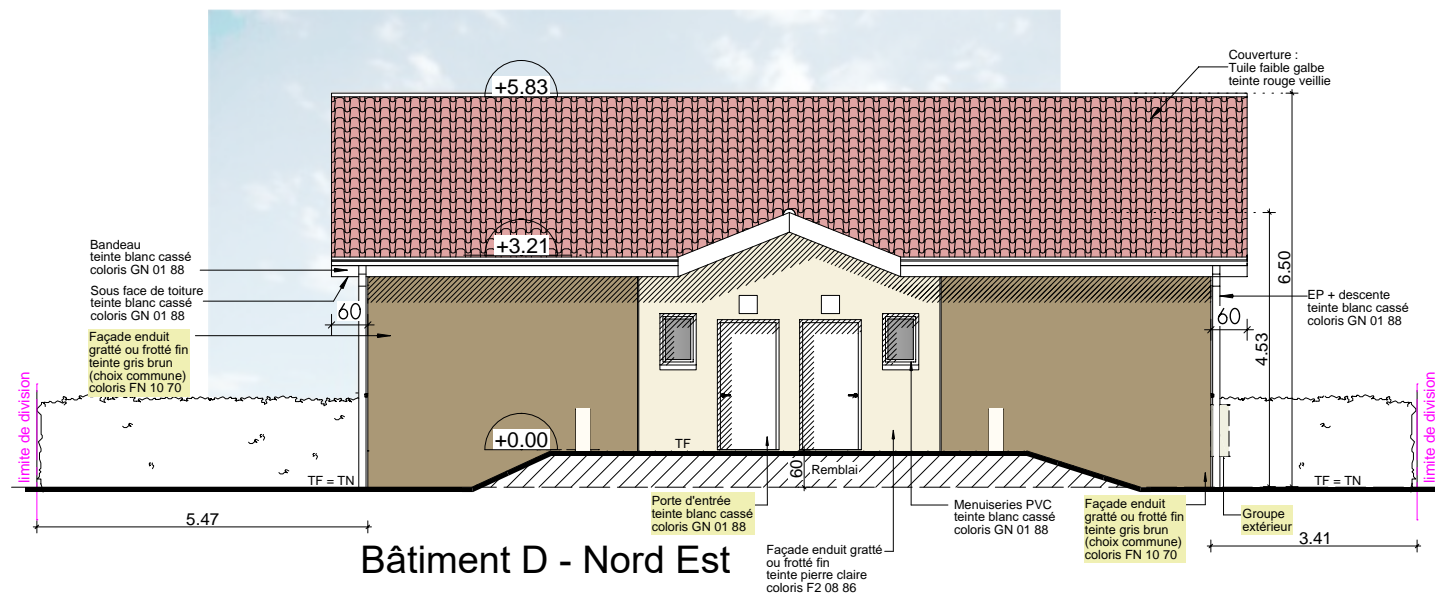
Salle communale - Nord Est



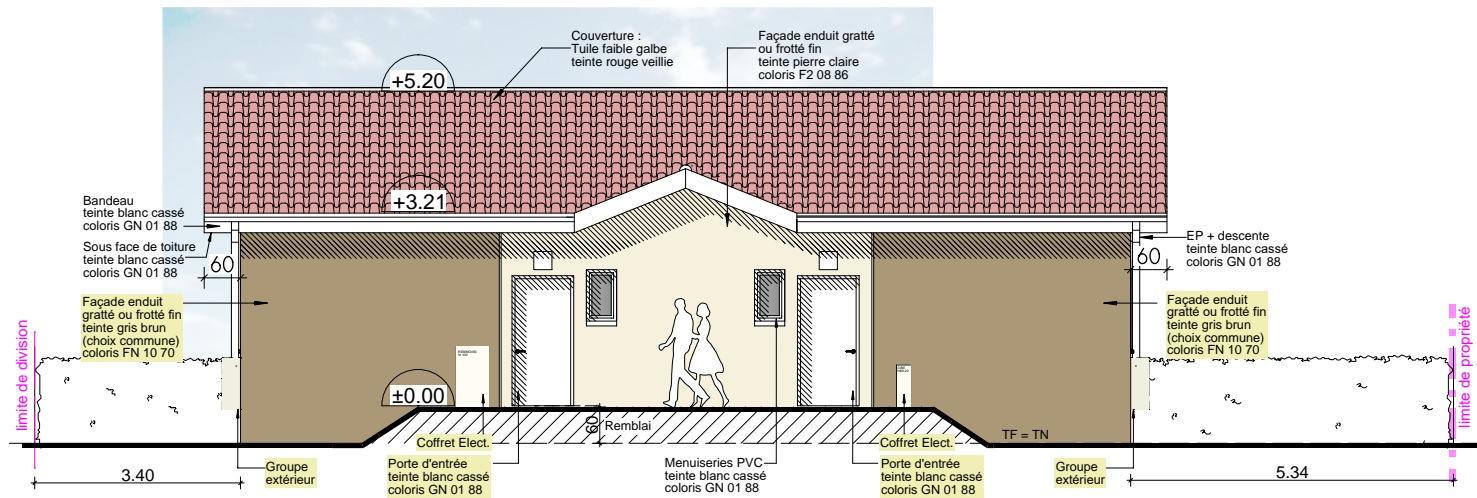
Salle communale - Sud Ouest



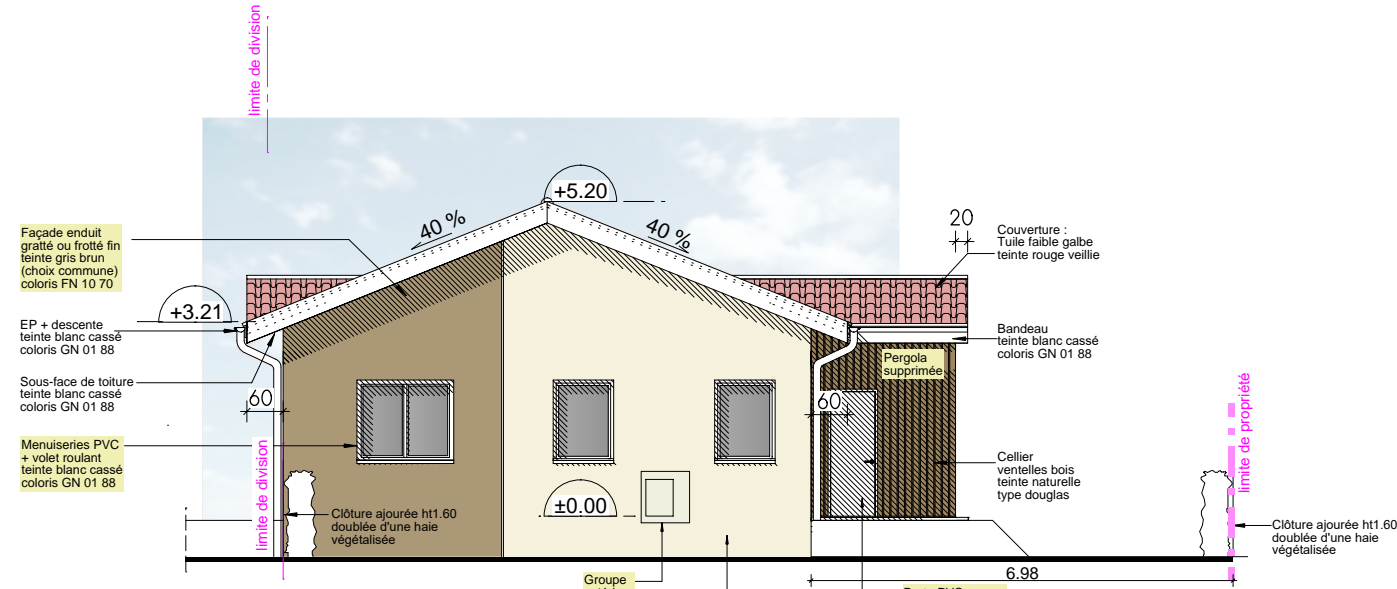
Salle communale - Nord Ouest



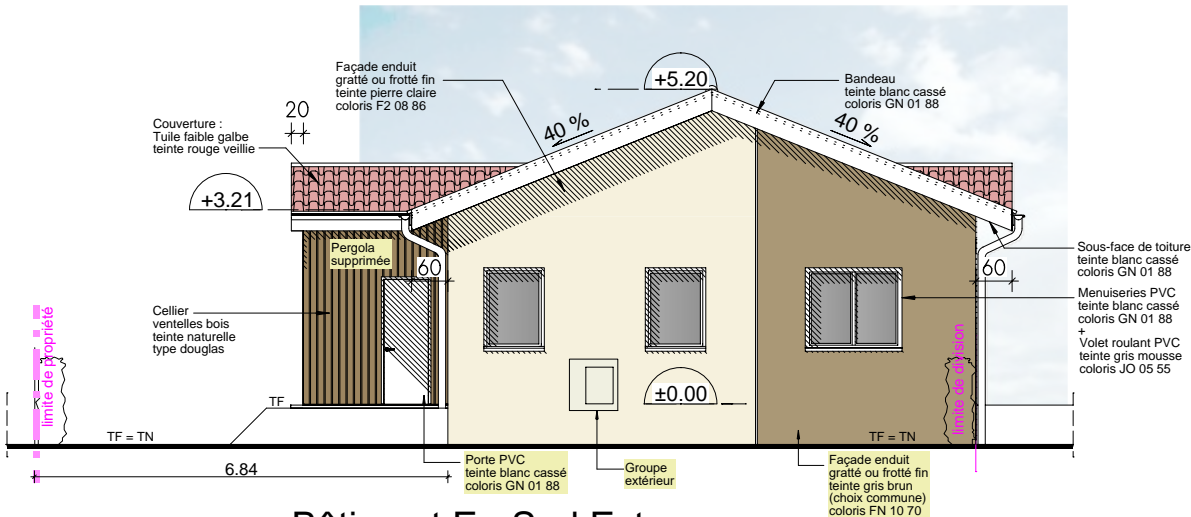




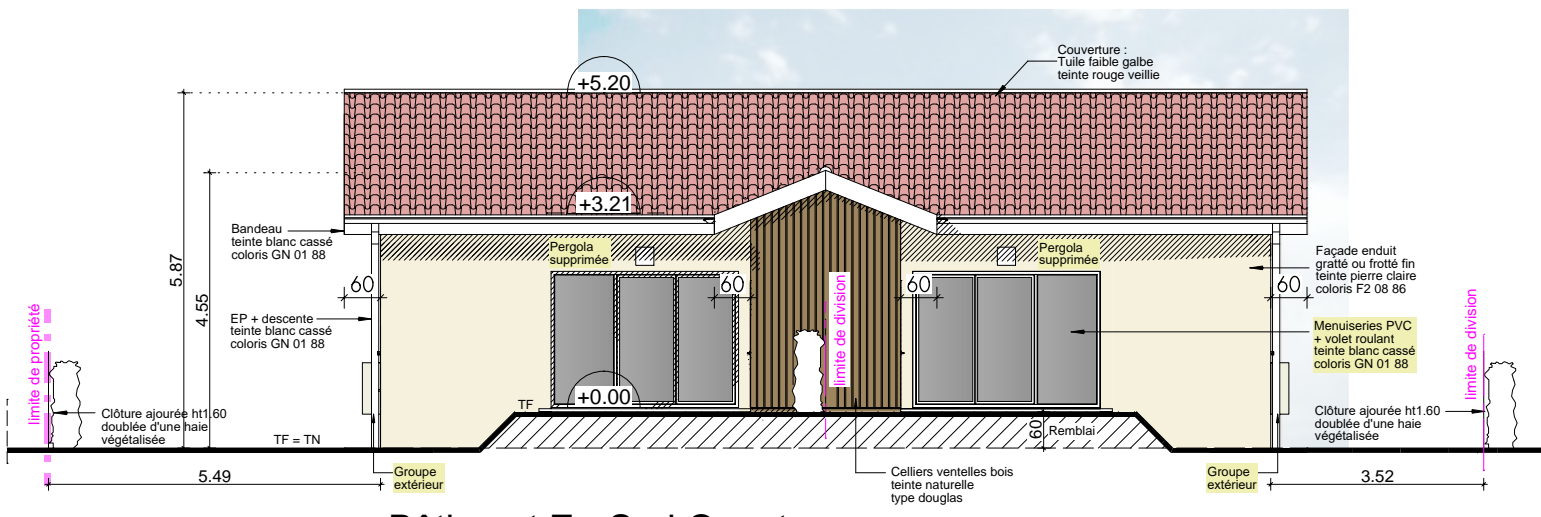
Bâtiment E - Nord Est



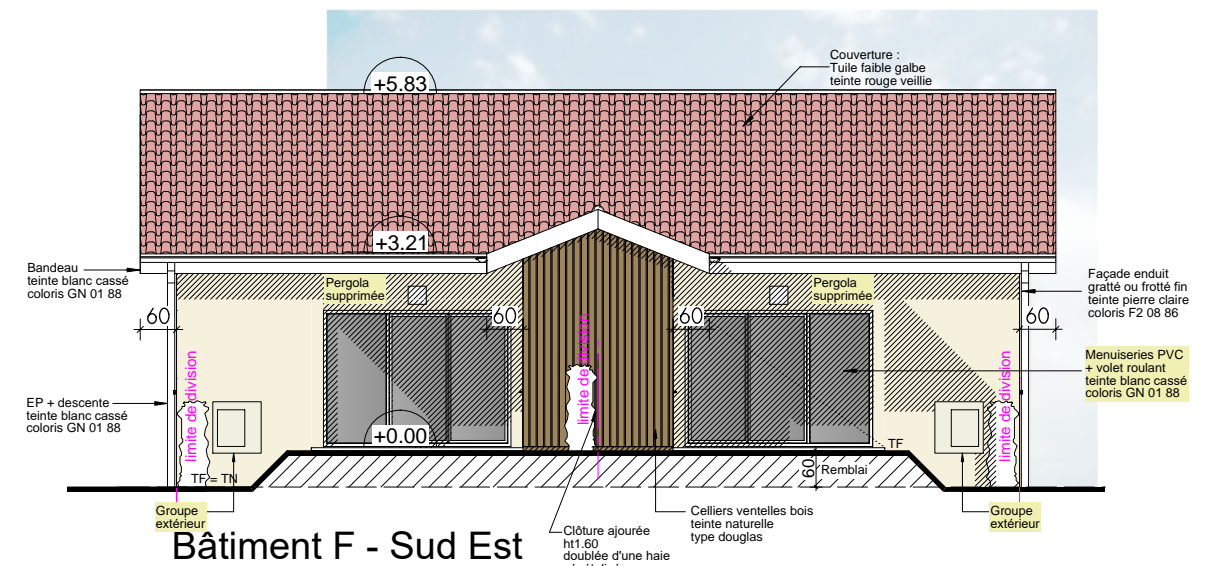
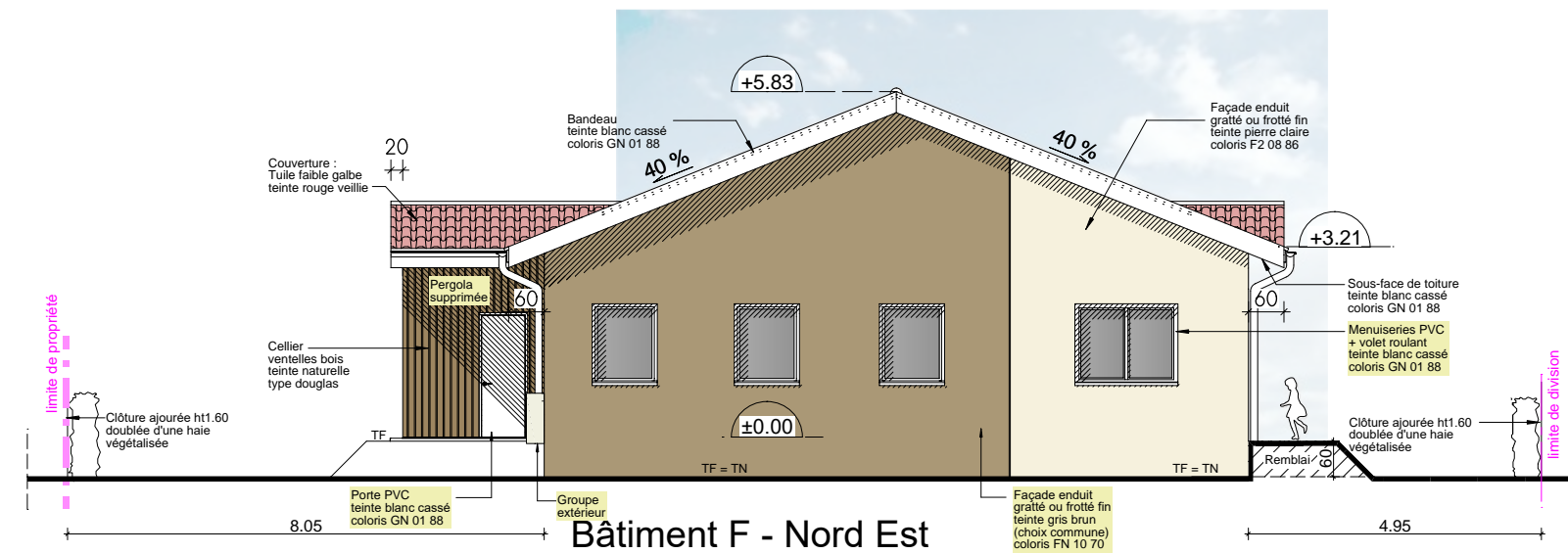
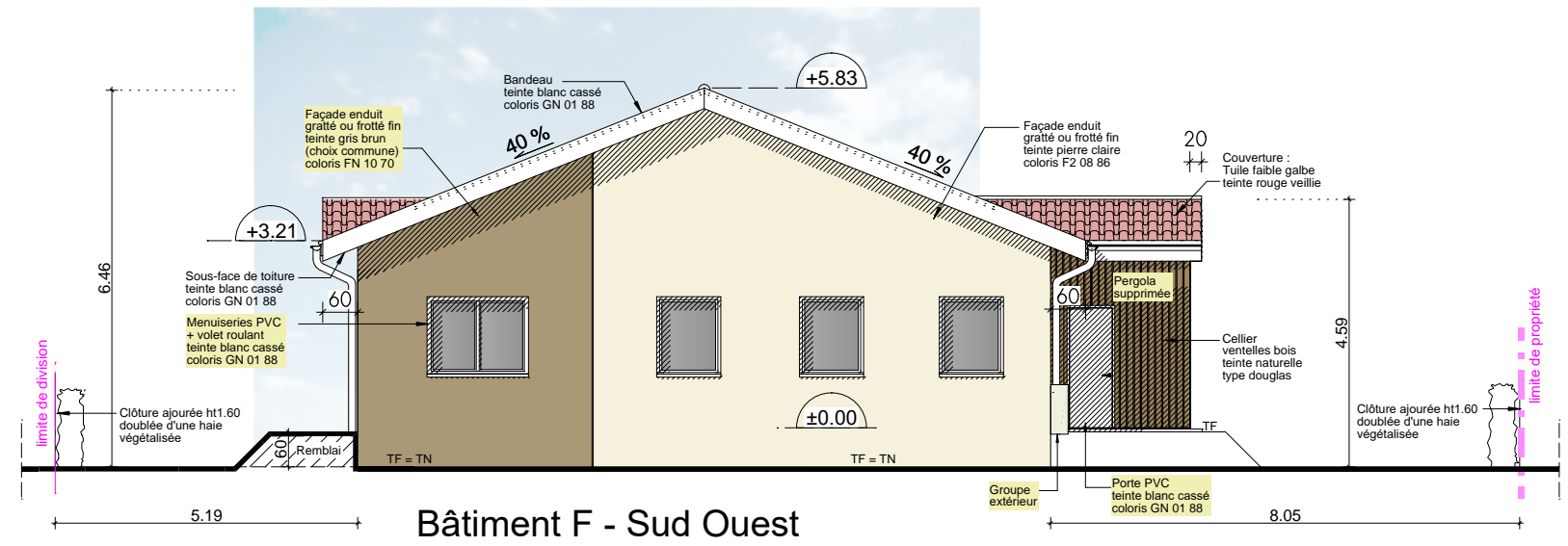
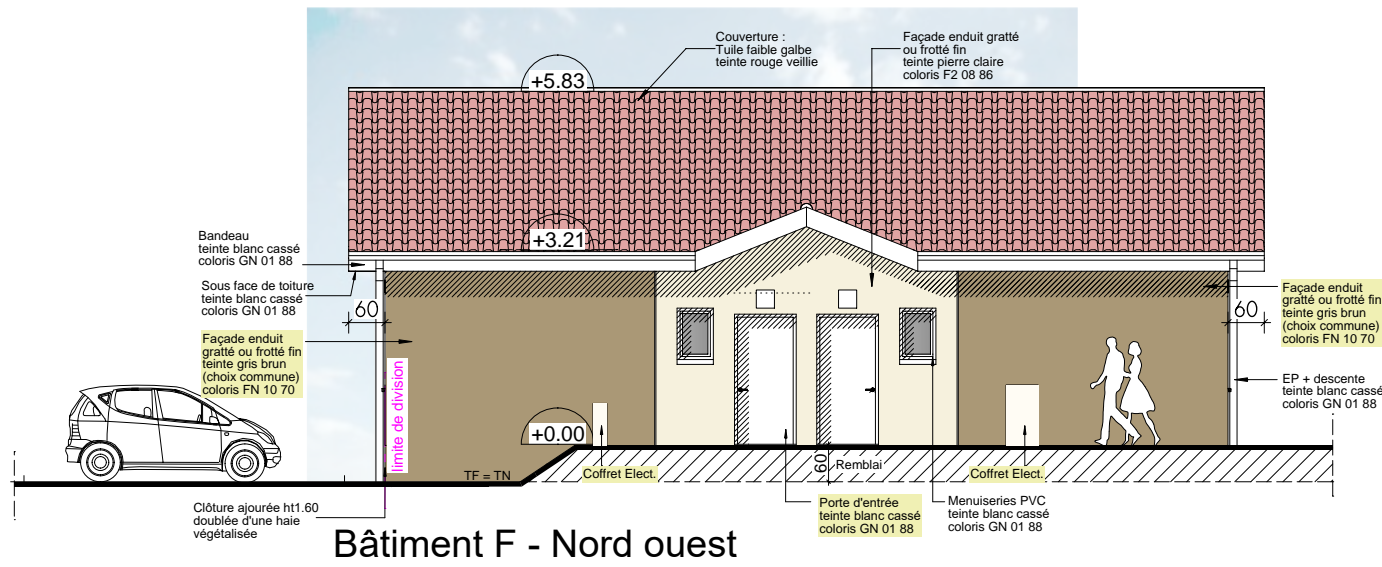
Bâtiment E - Nord Ouest



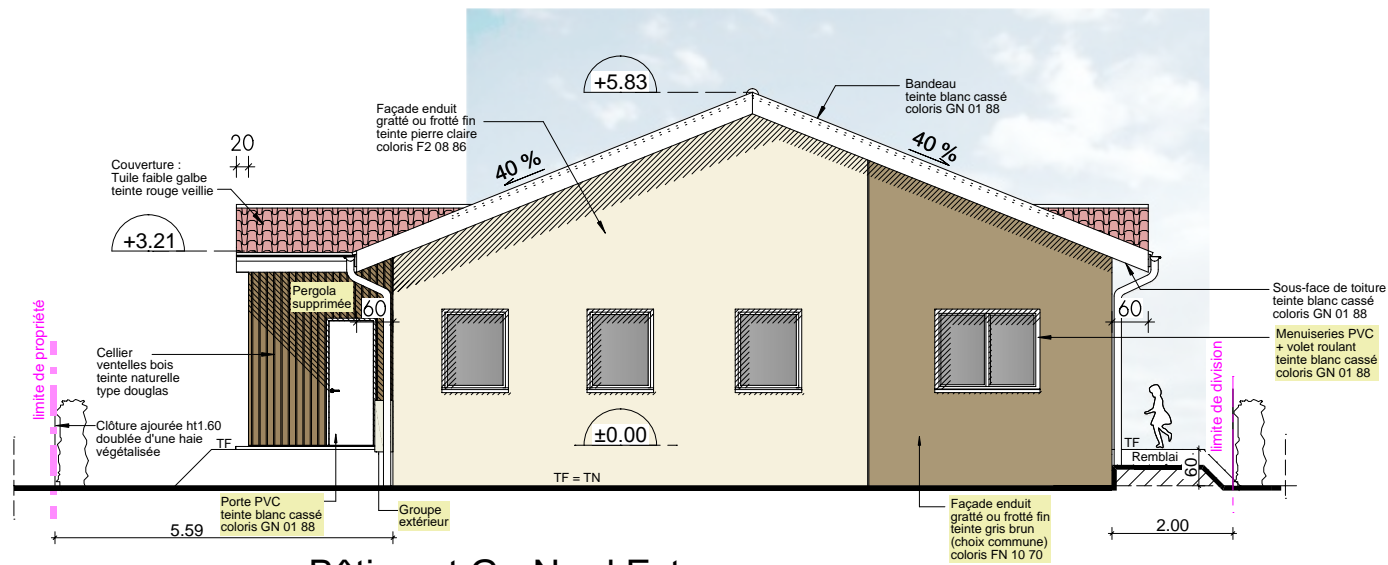
Bâtiment E - Sud Est



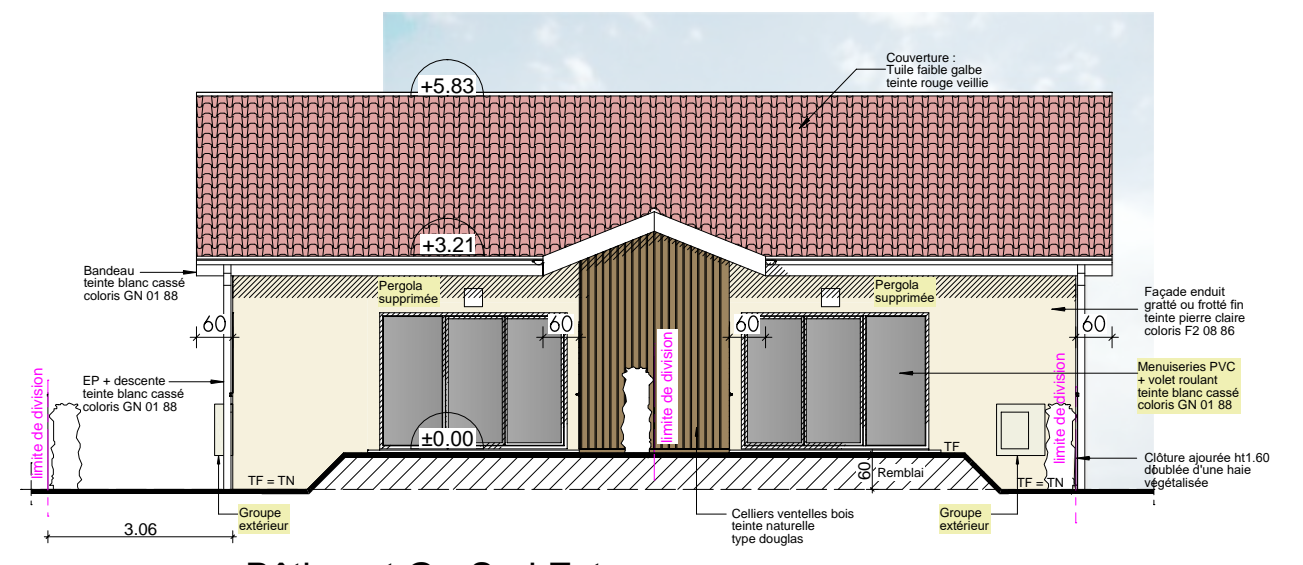
Bâtiment E - Sud Ouest



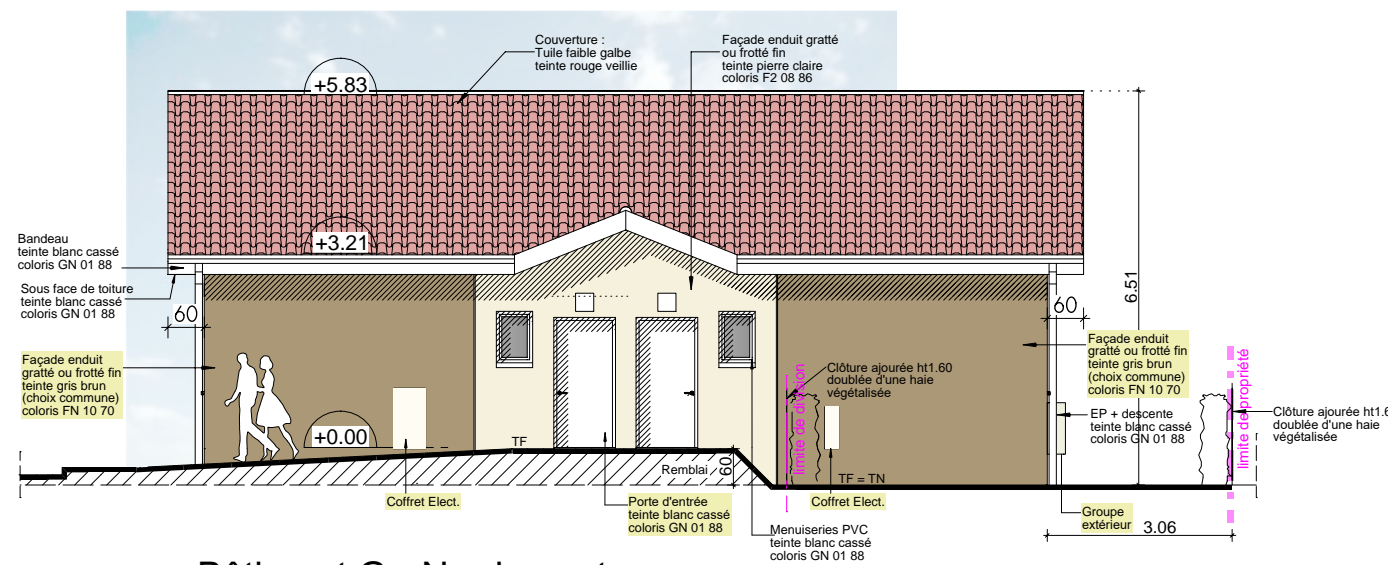




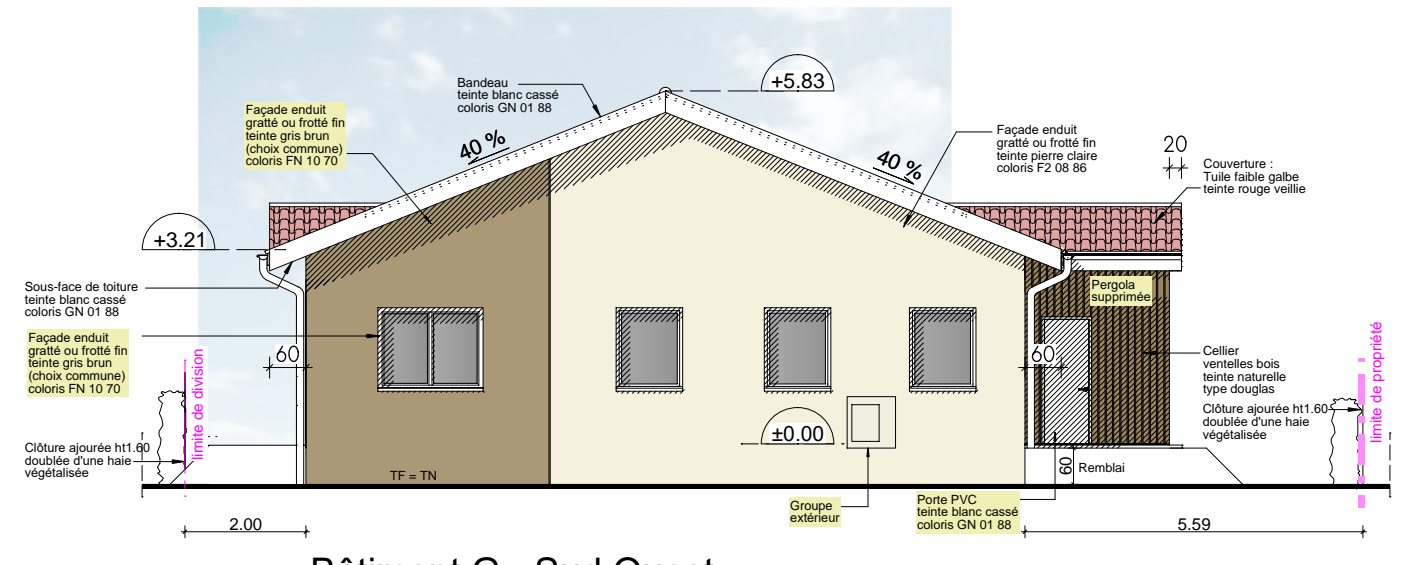
Bâtiment G - Nord Est



Bâtiment G - Sud Est

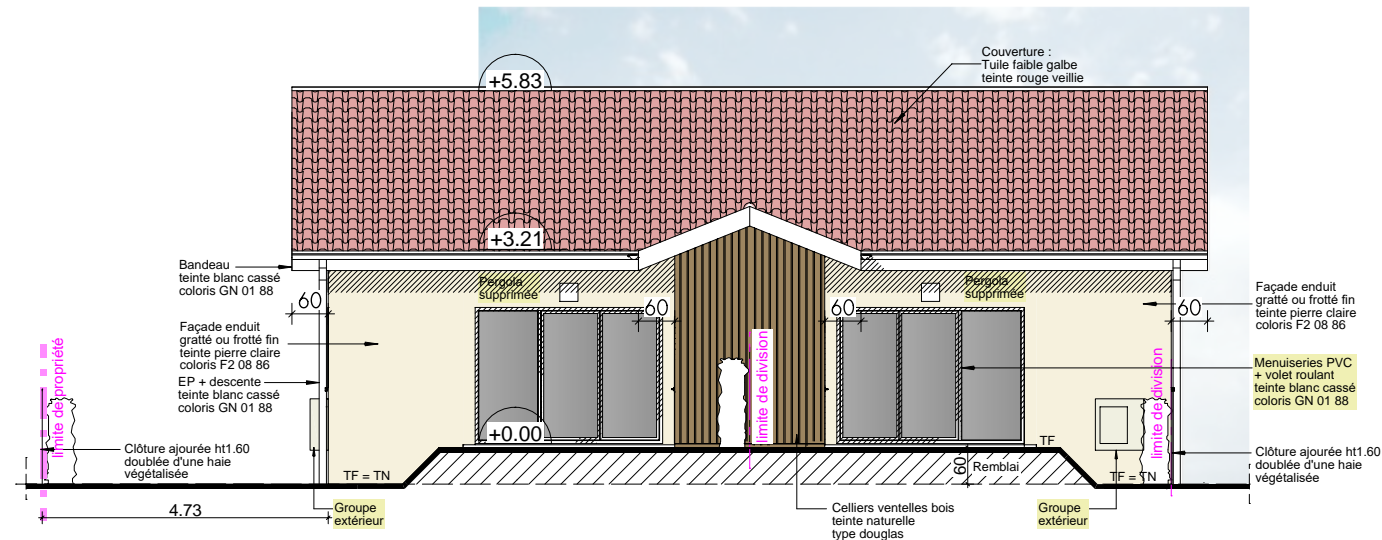


Bâtiment G - Nord ouest

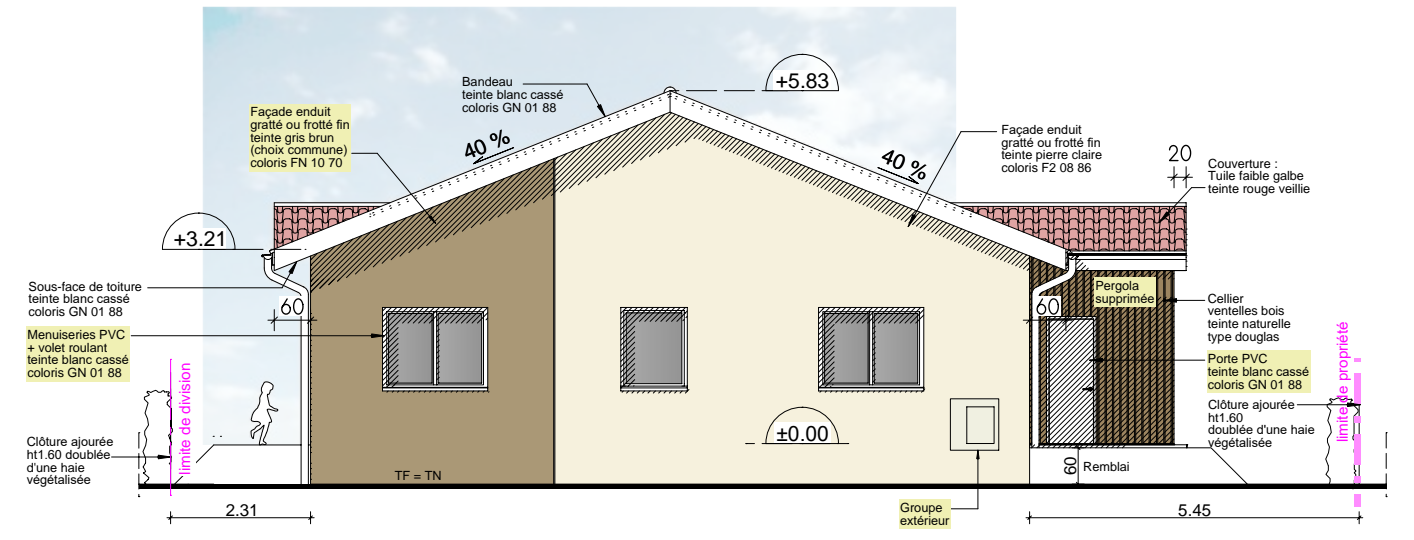


Bâtiment G - Sud Ouest

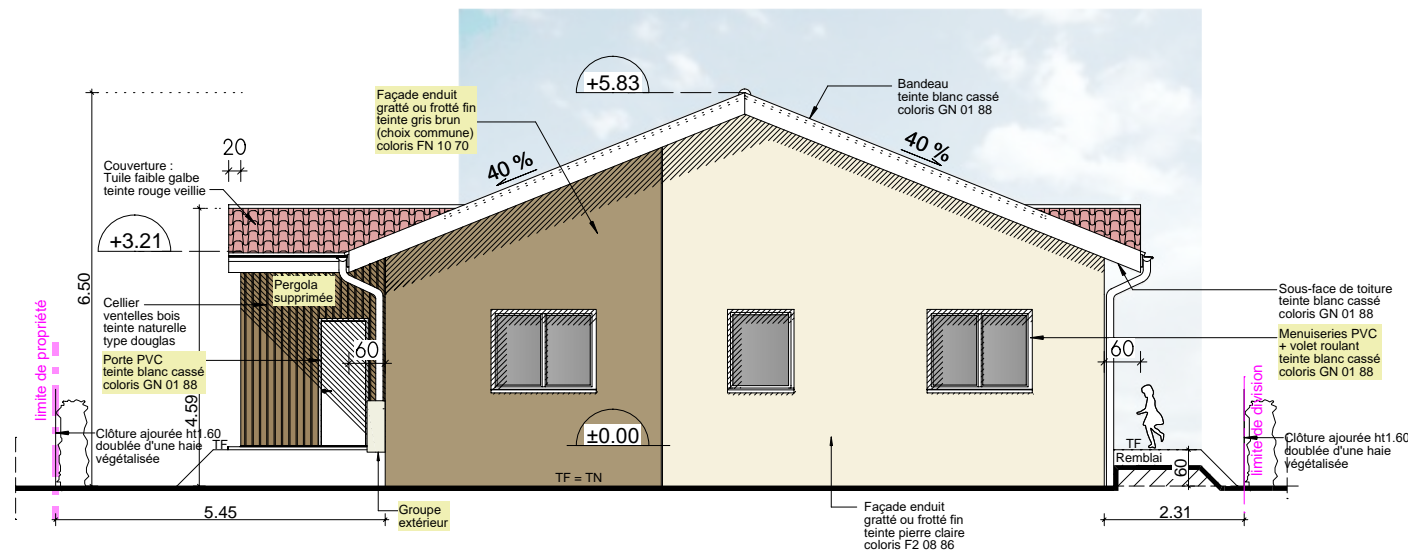




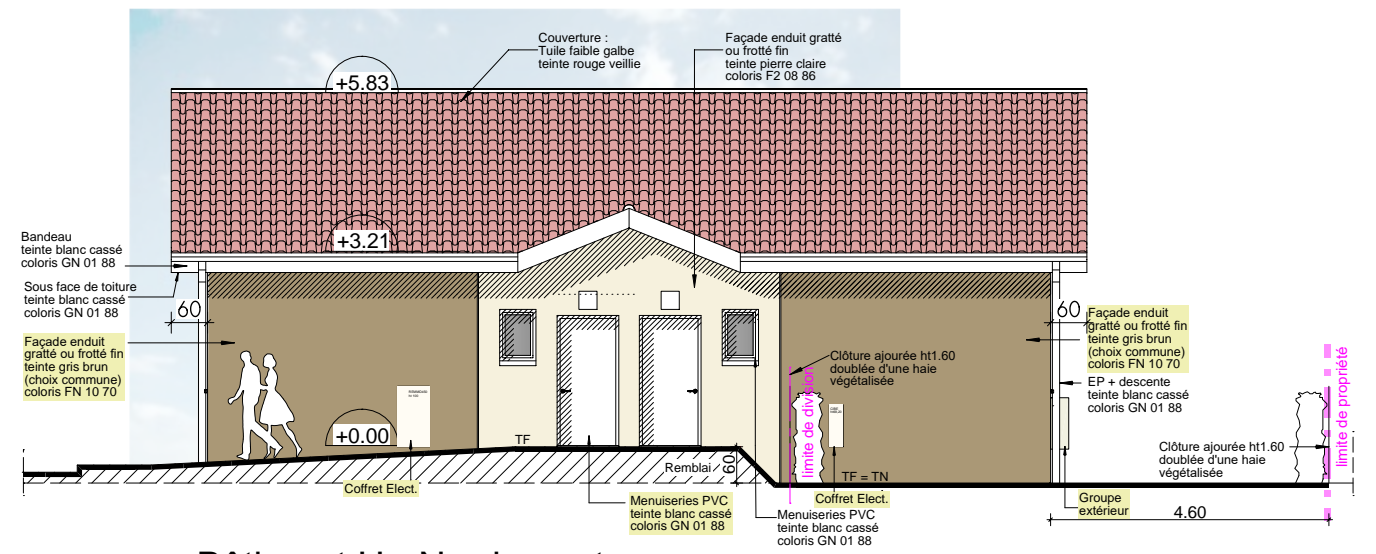
Bâtiment H - Sud Est



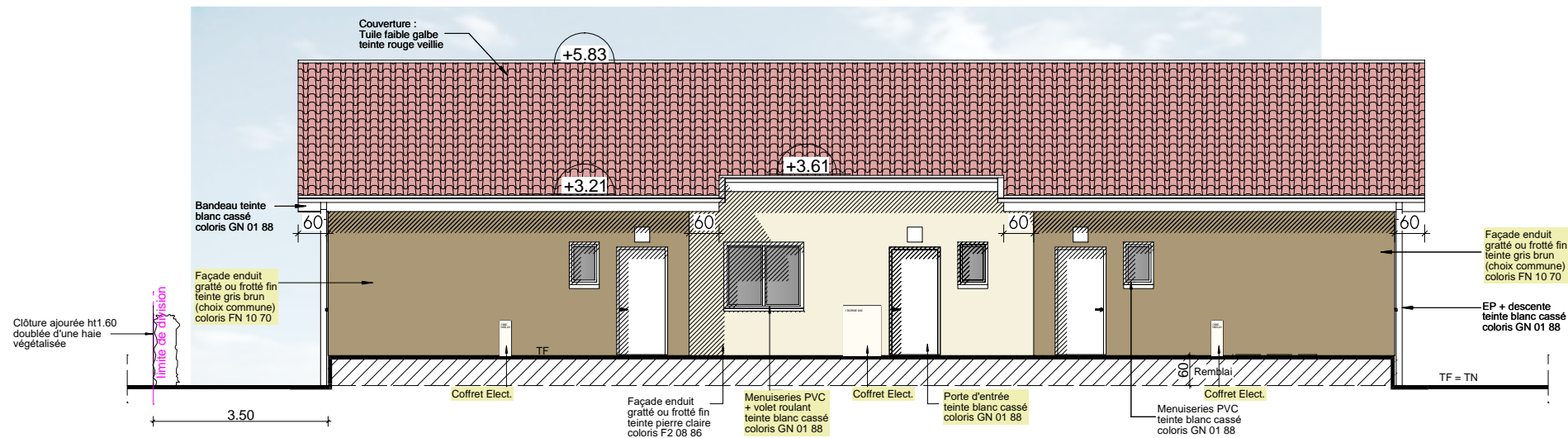
Bâtiment H - Sud Ouest



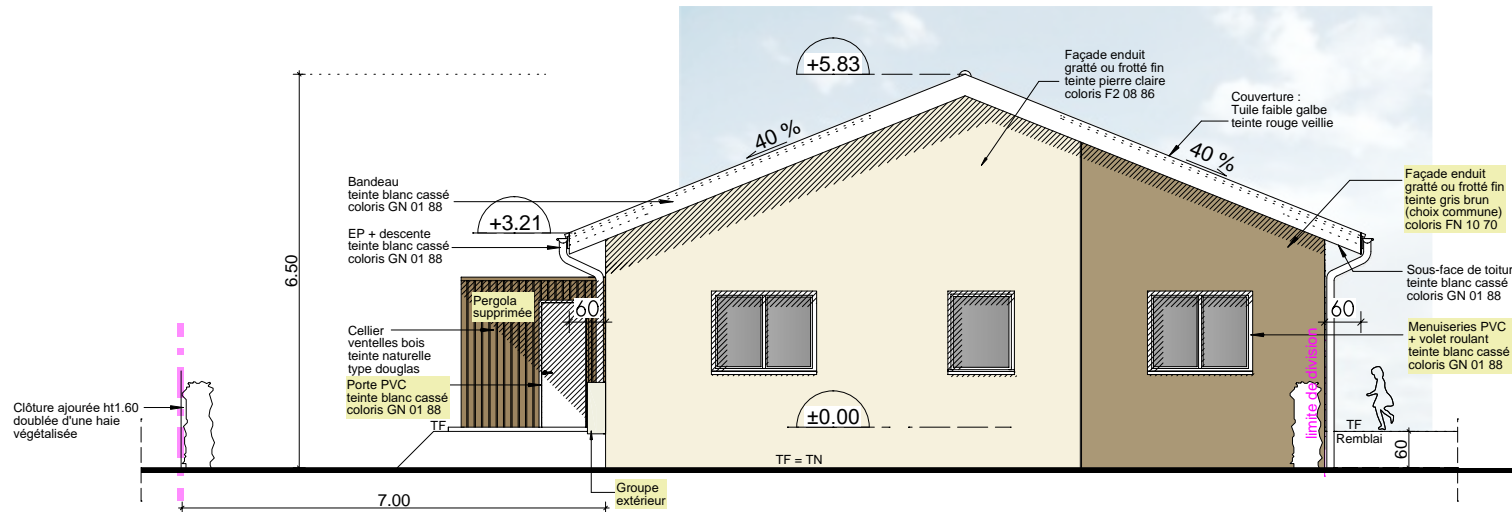
Bâtiment H - Nord Est



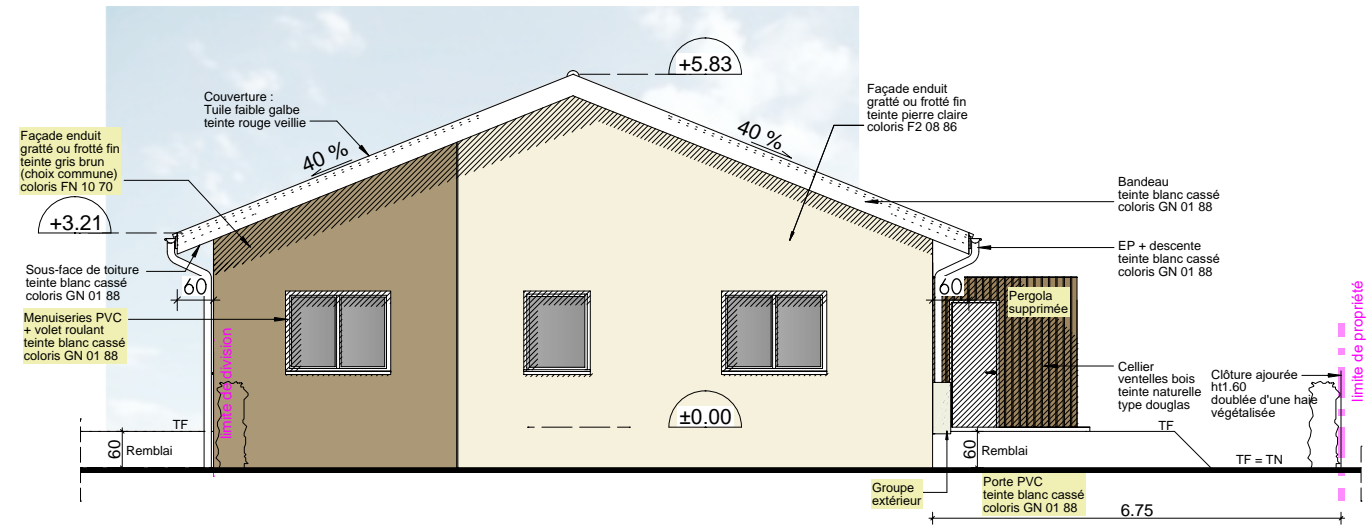
Bâtiment H - Nord ouest



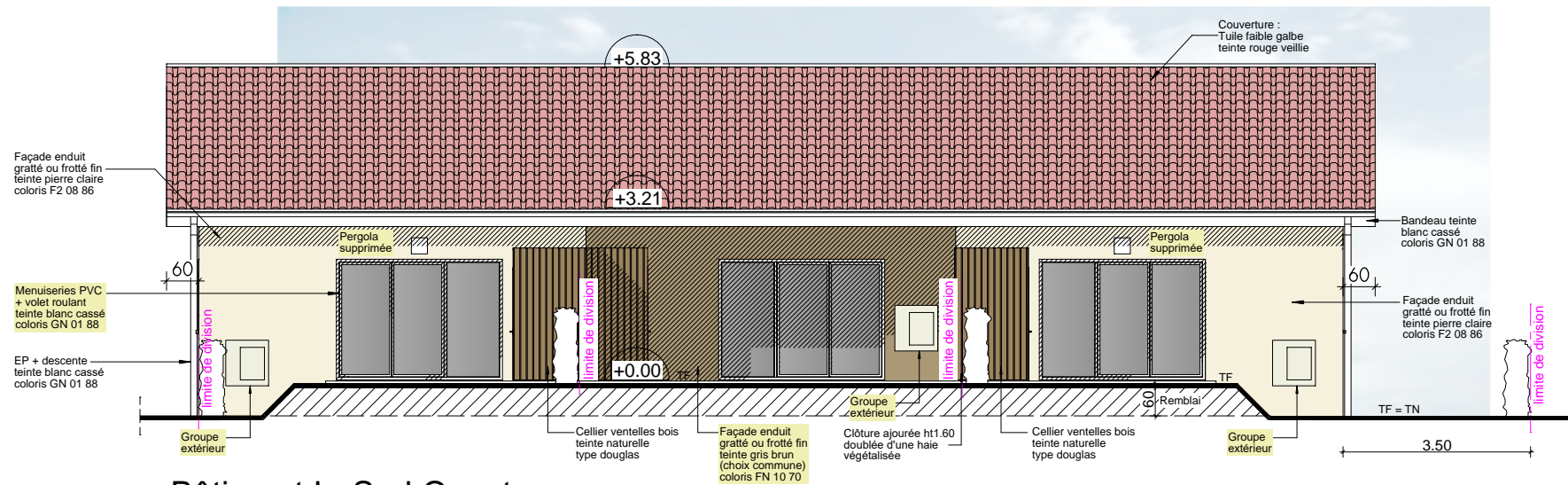
Bâtiment I - Nord Est



Bâtiment I - Sud Est

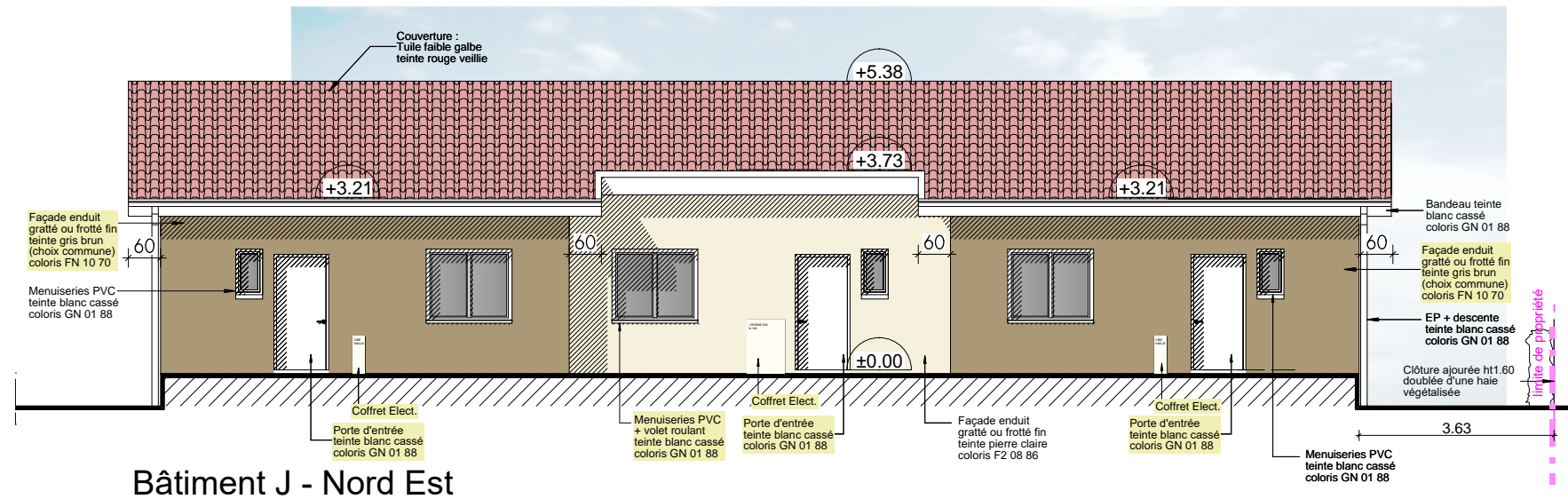


Bâtiment I - Nord Ouest

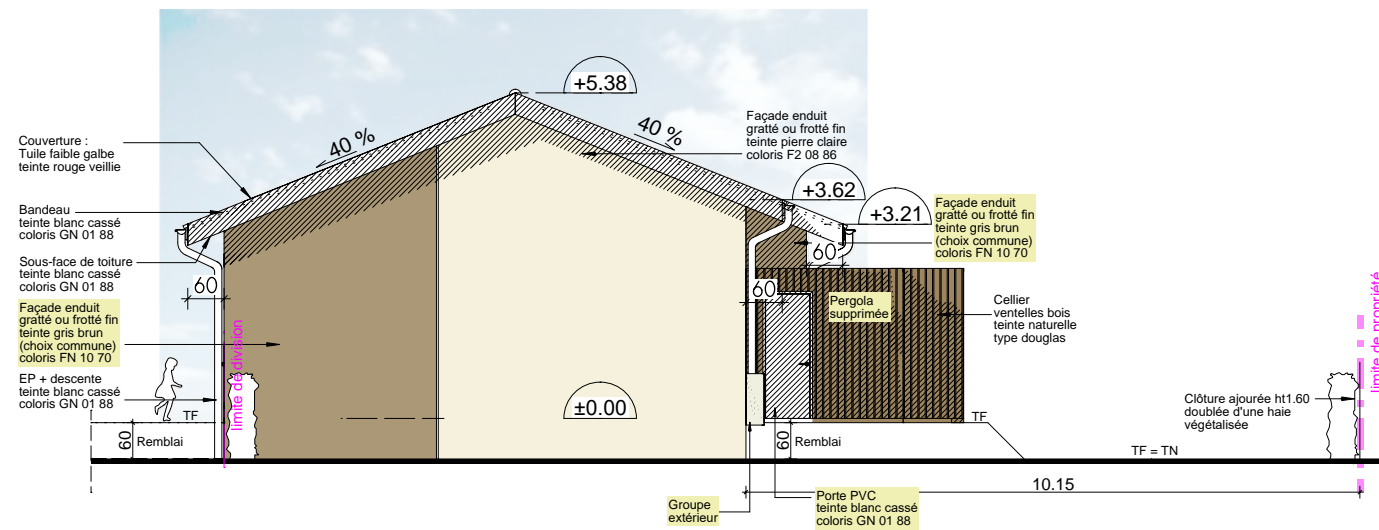


Bâtiment I - Sud Ouest

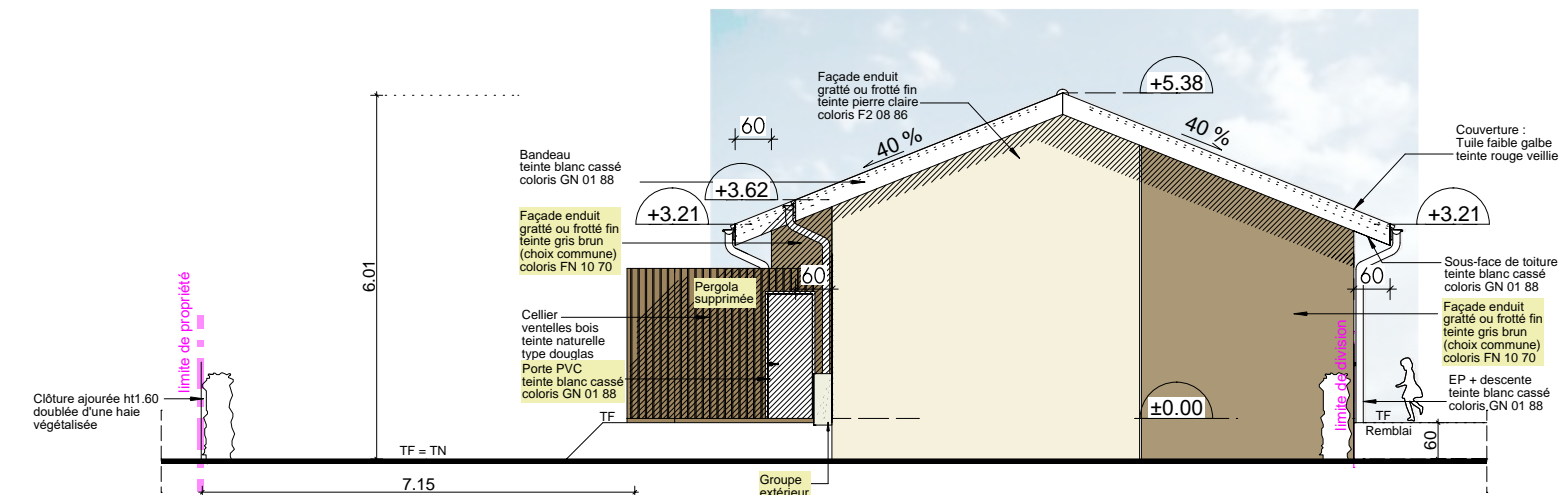




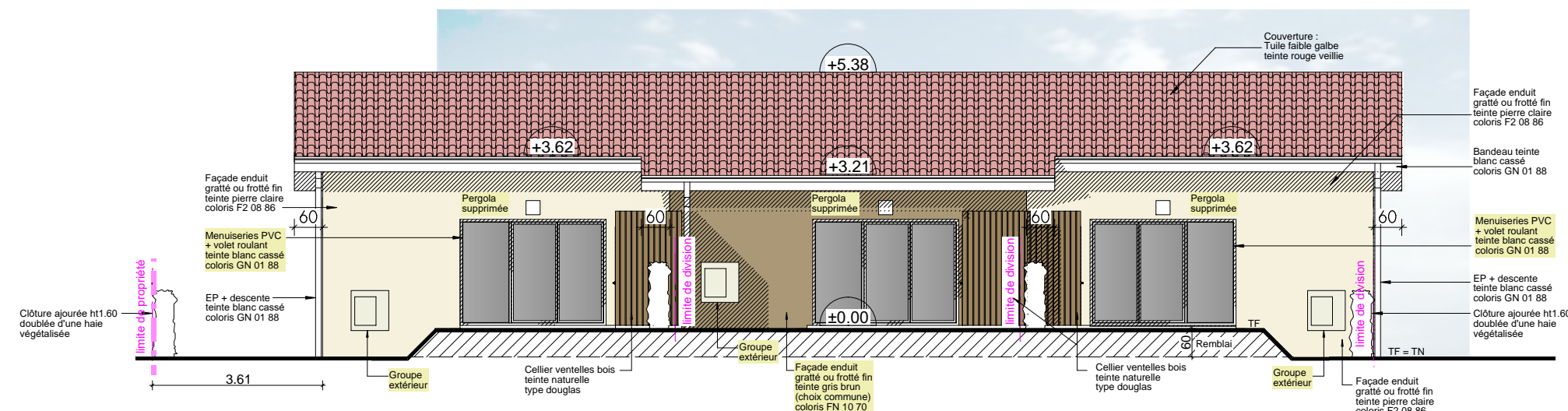
Bâtiment J - Nord Est



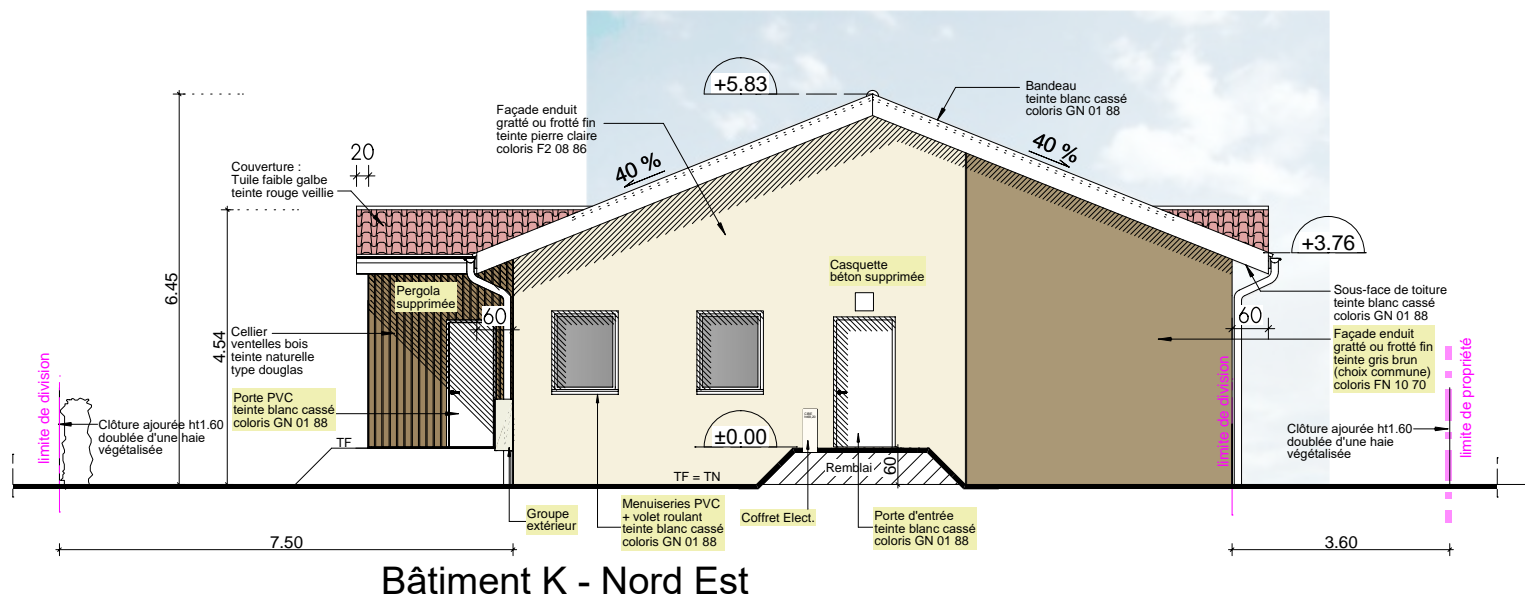
Bâtiment J - Nord Ouest



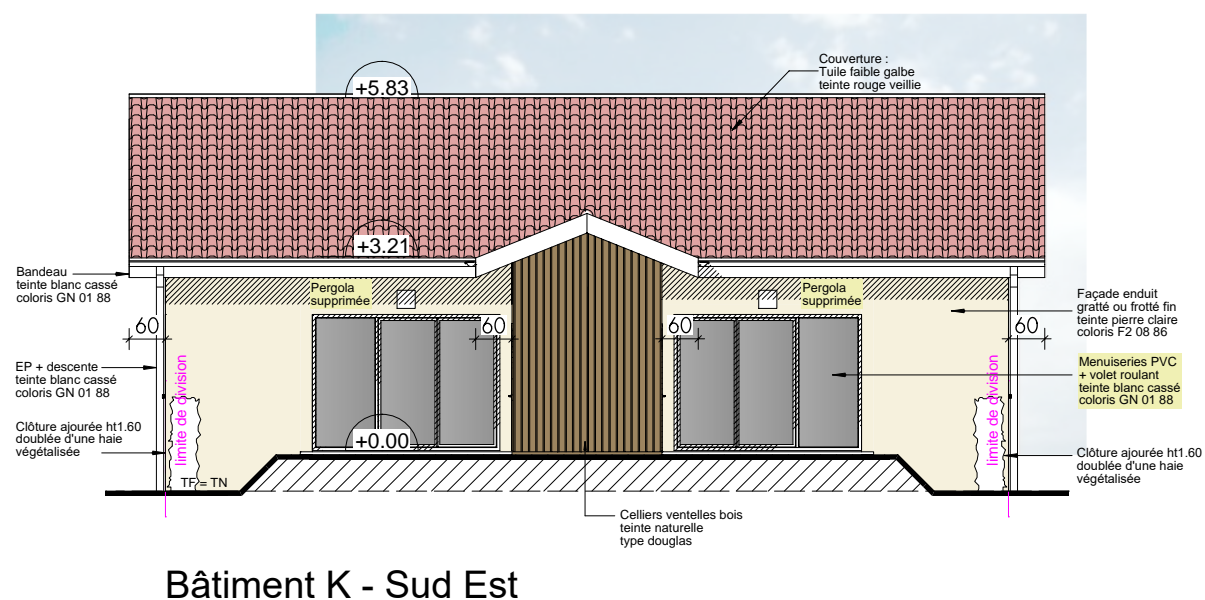
Bâtiment J - Sud Est



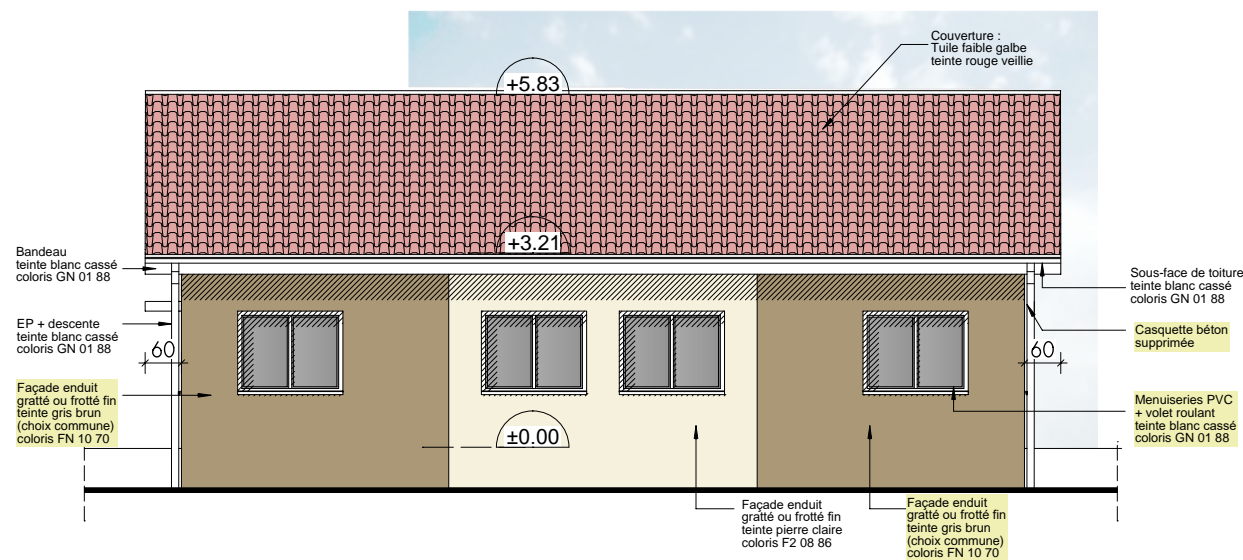
Bâtiment J - Sud Ouest



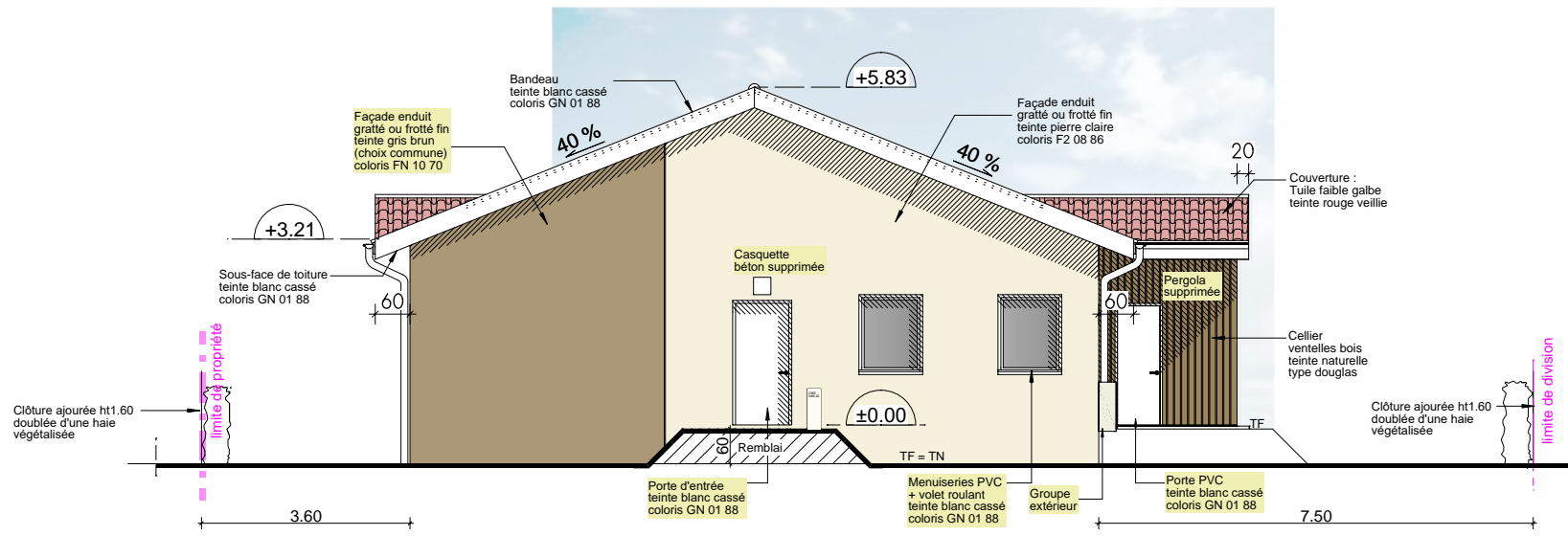
Bâtiment K - Nord Est



Bâtiment K - Sud Est

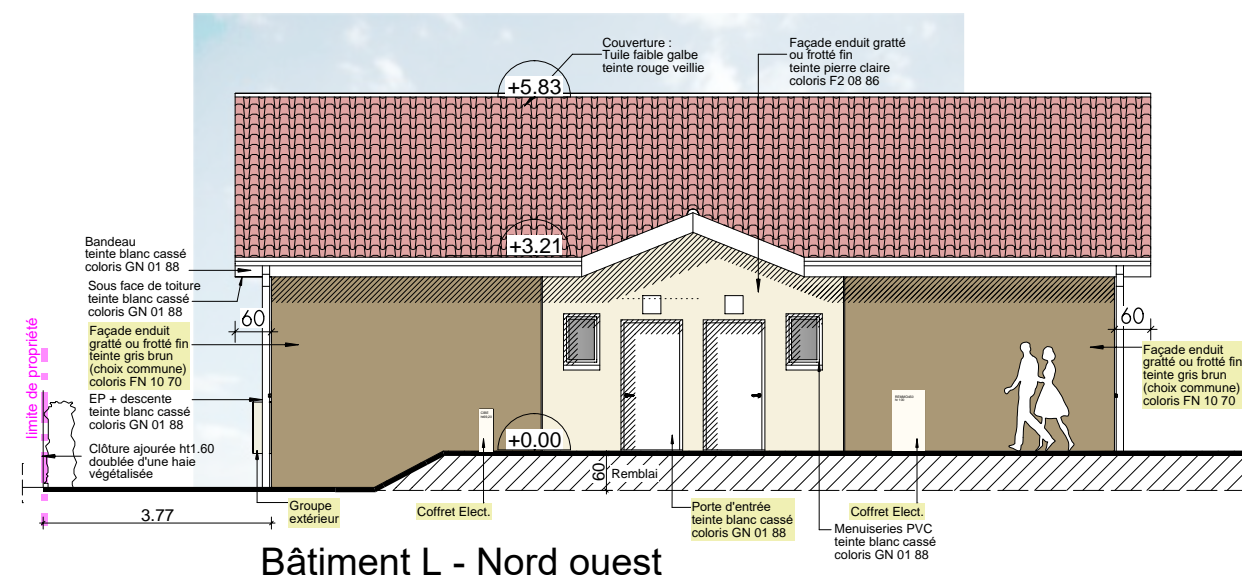
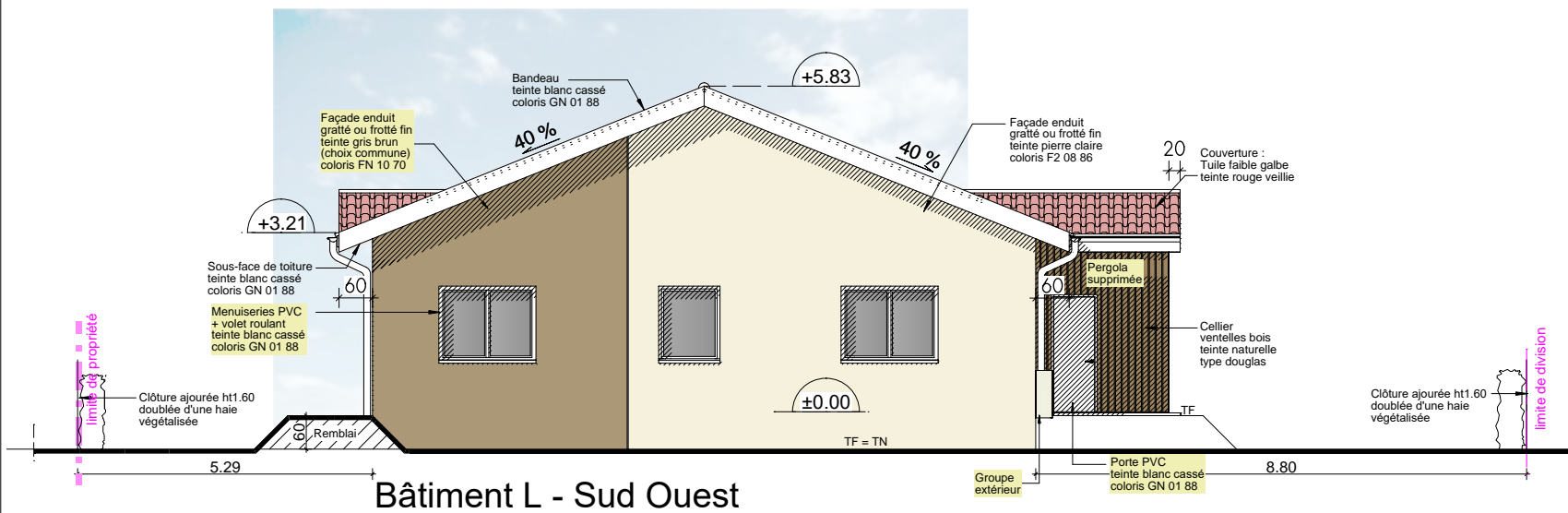
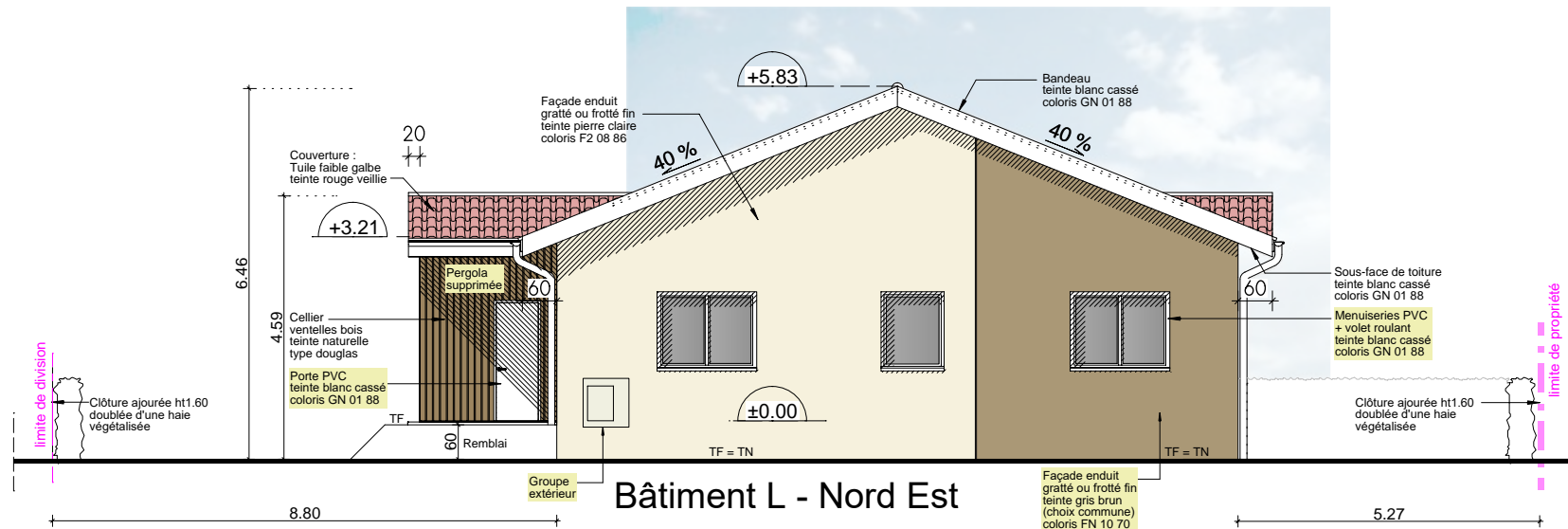
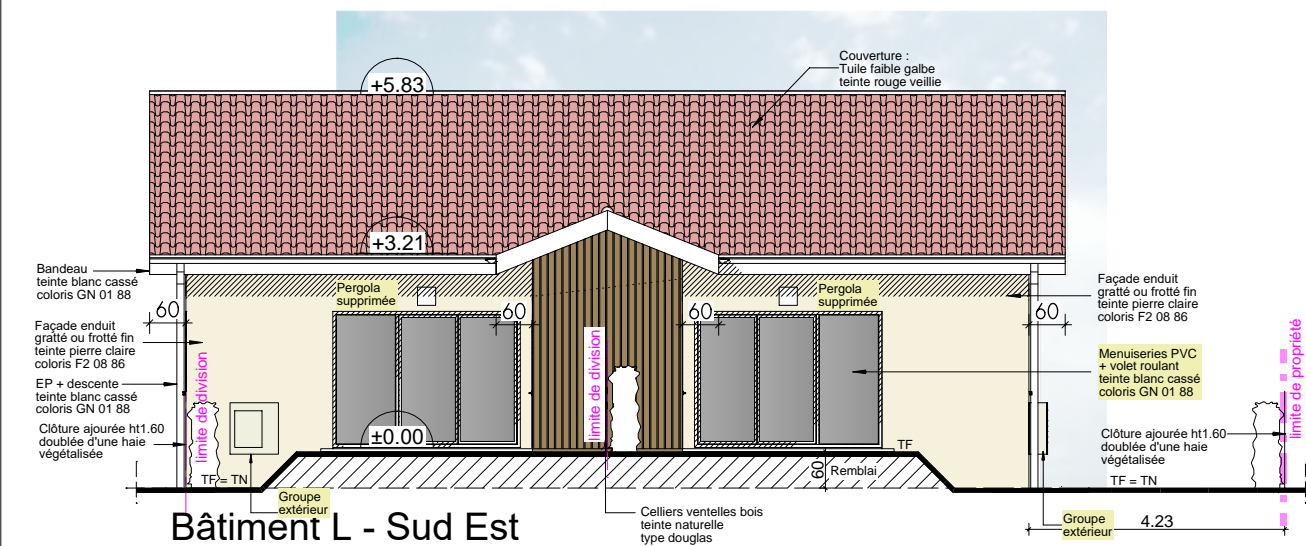


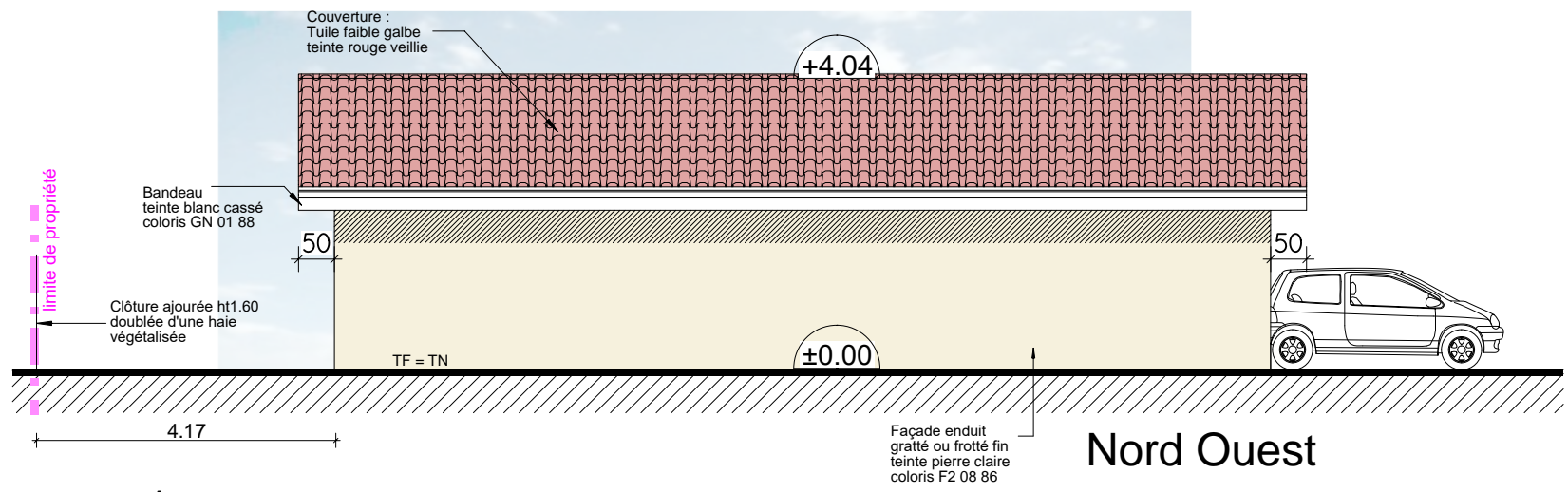
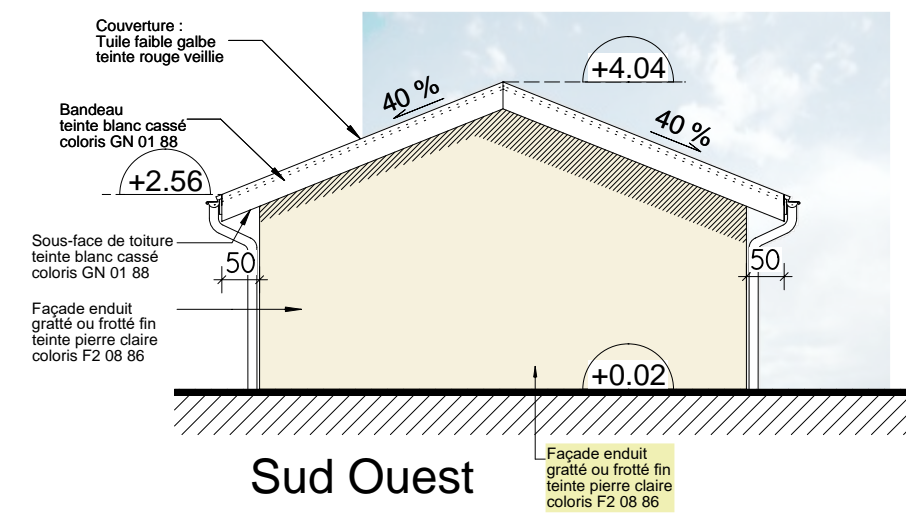
Bâtiment K - Nord Ouest



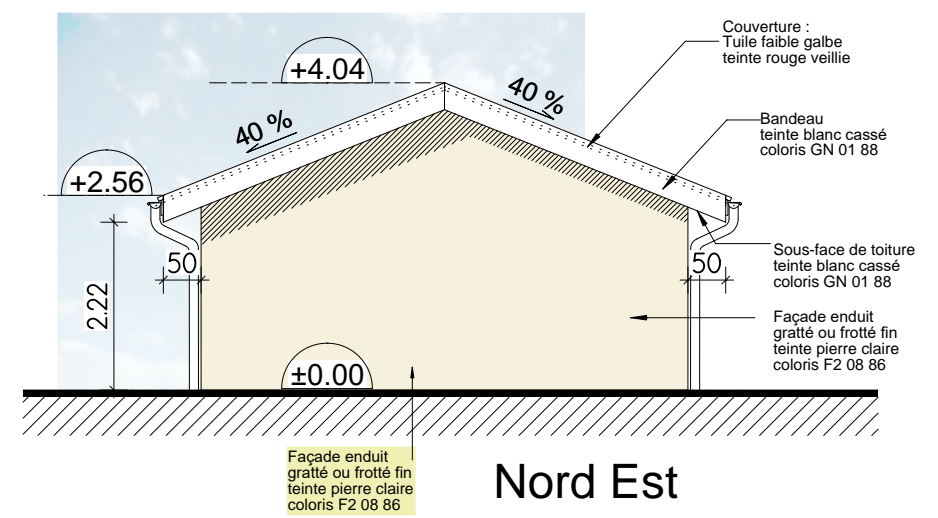
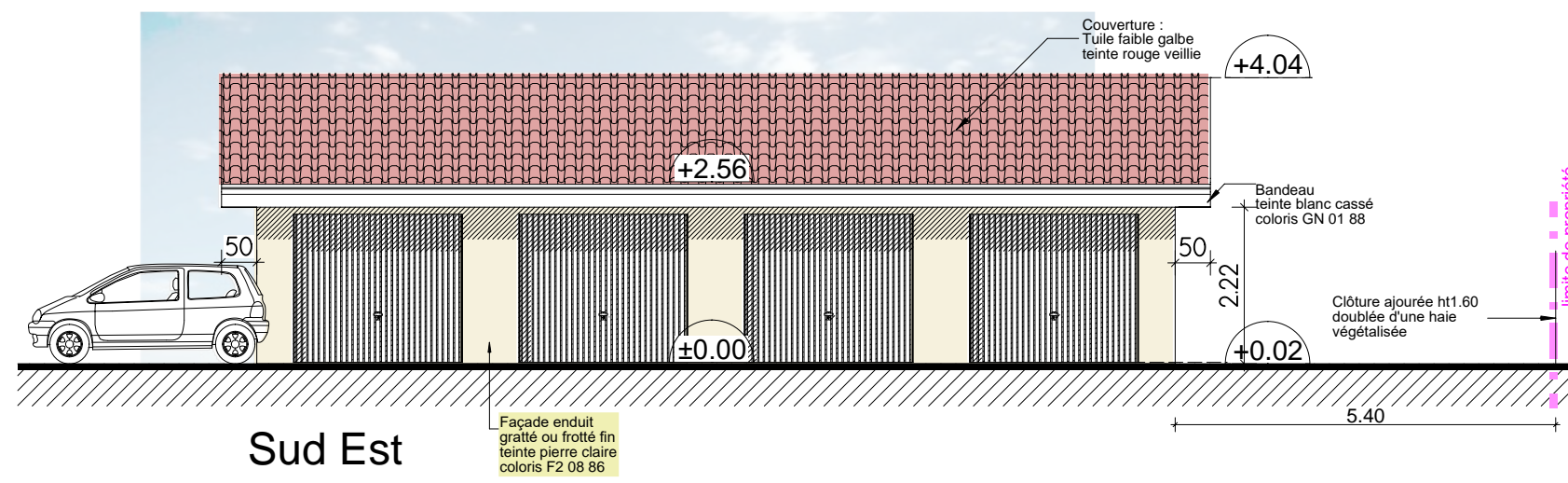
Bâtiment K - Sud Ouest



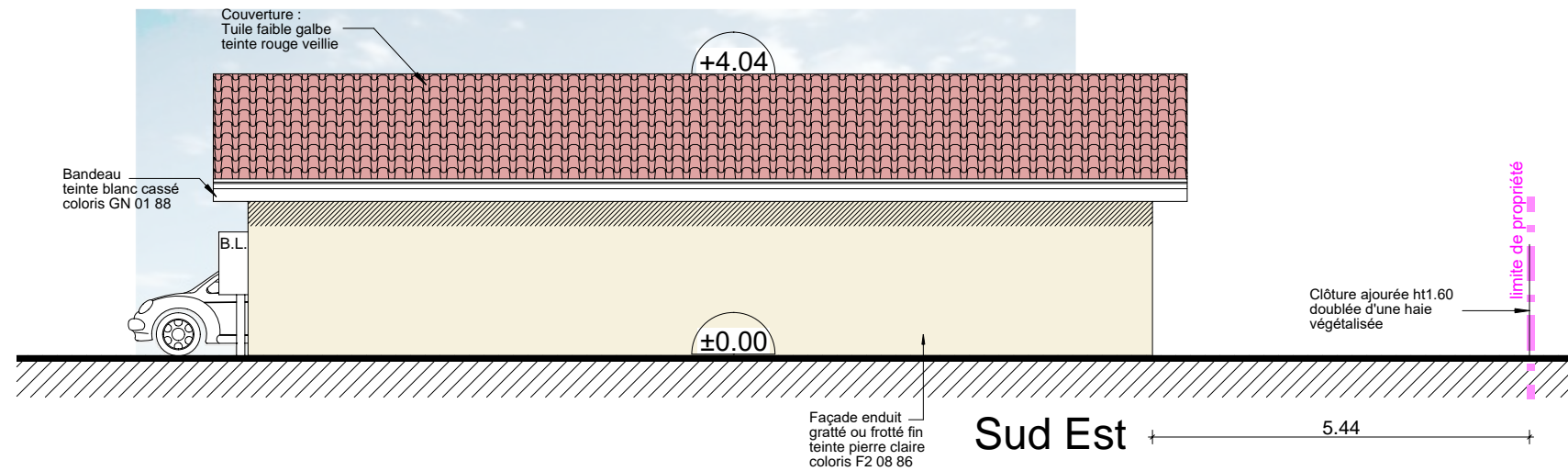
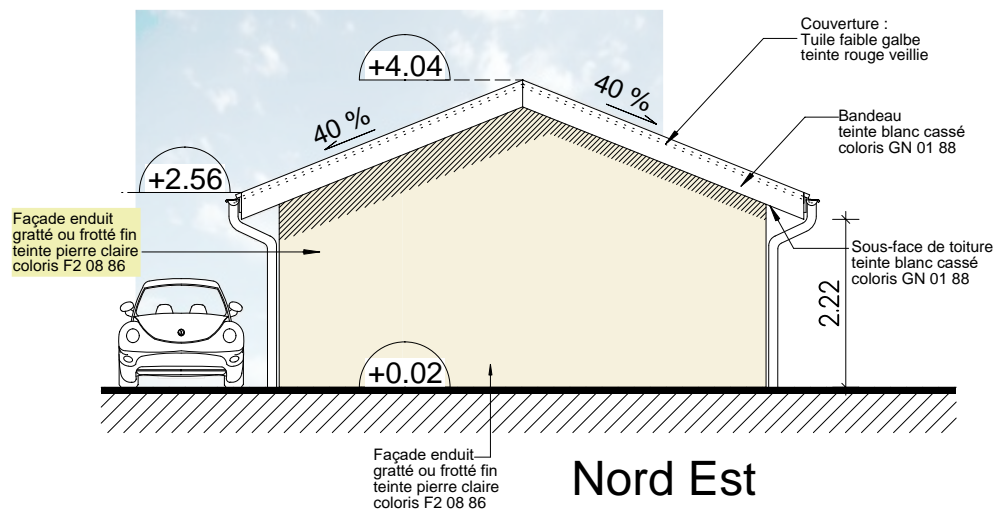




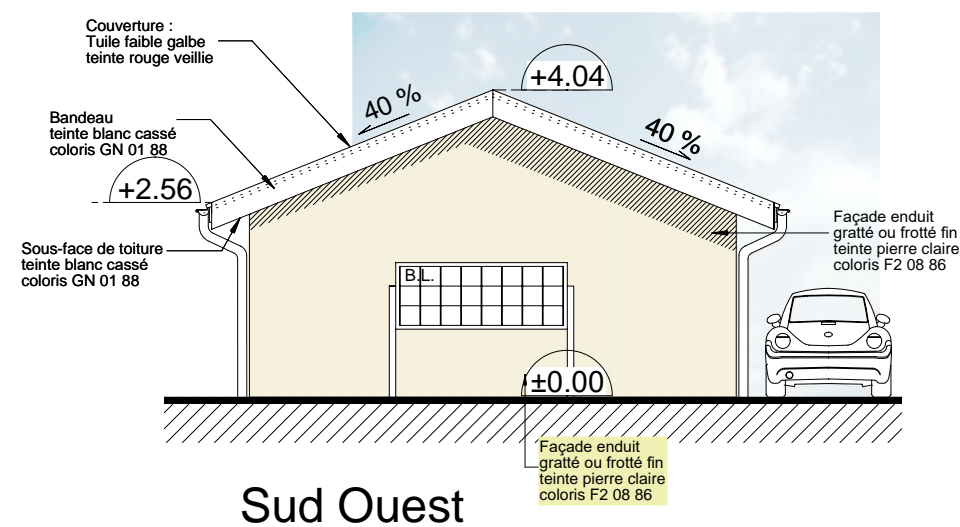
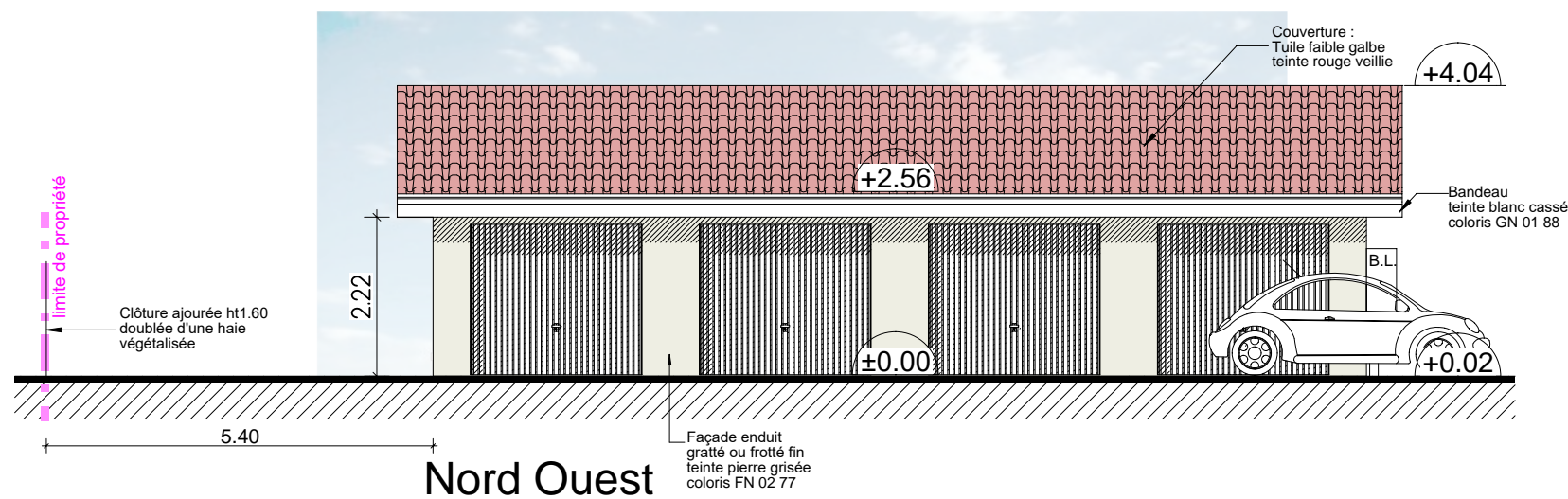
4 Garages - 1

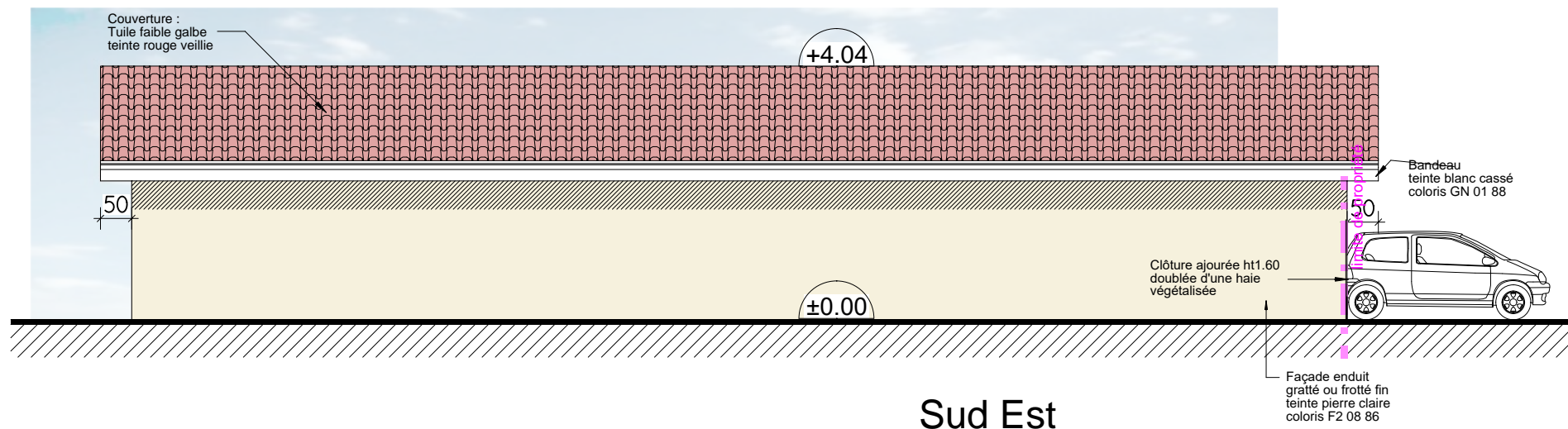
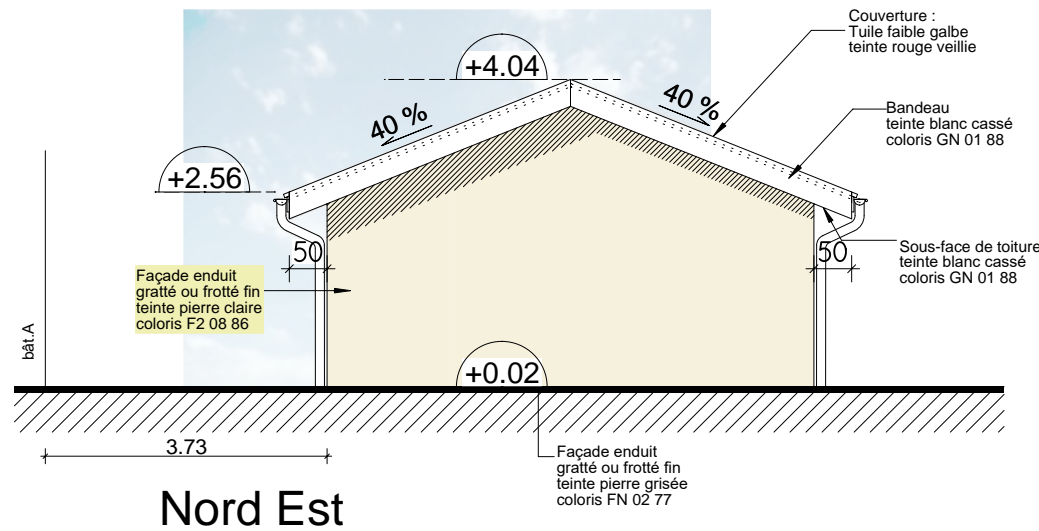




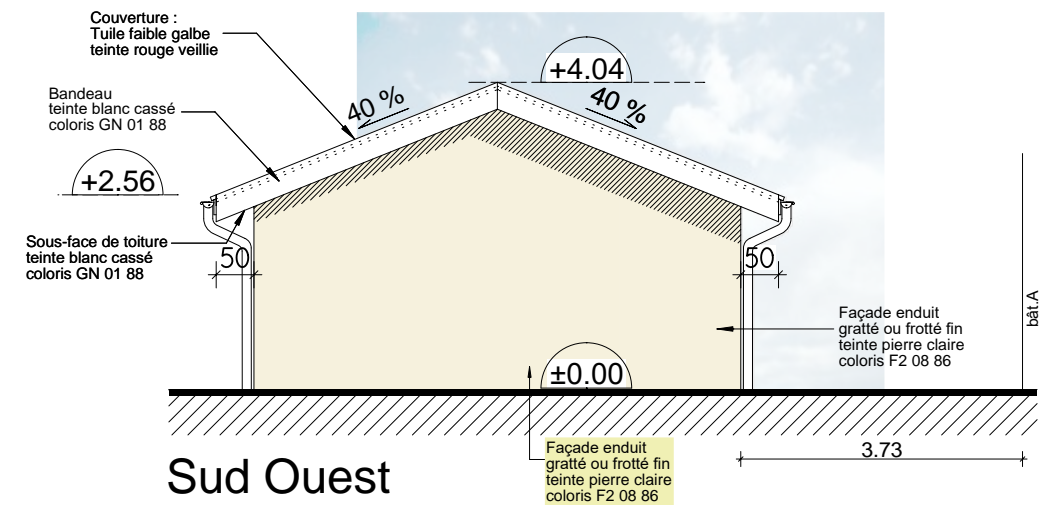
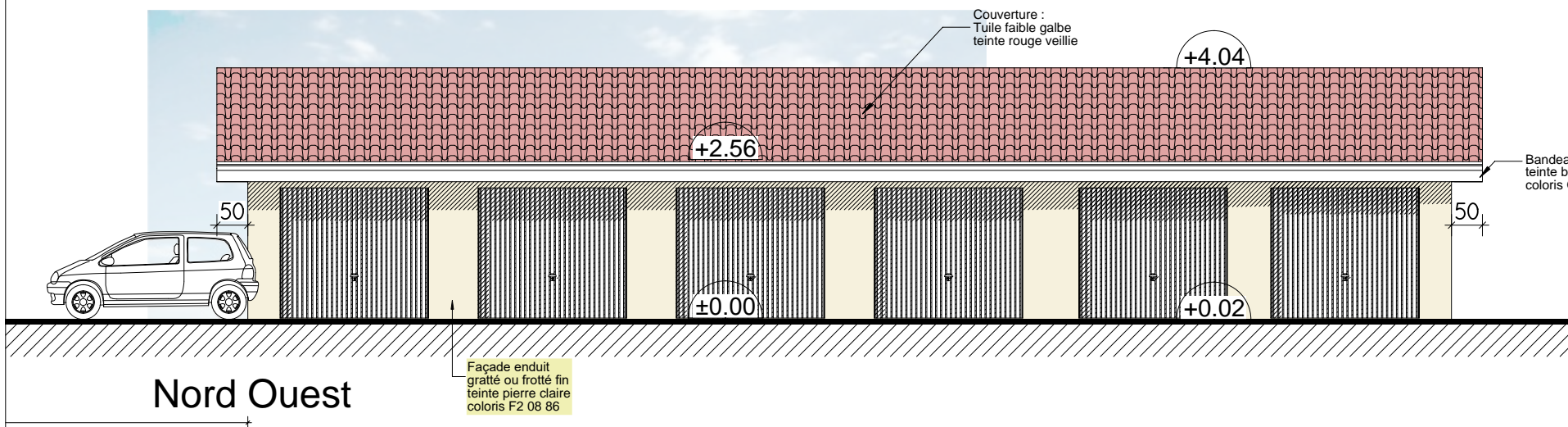


## 4 Garages - 2

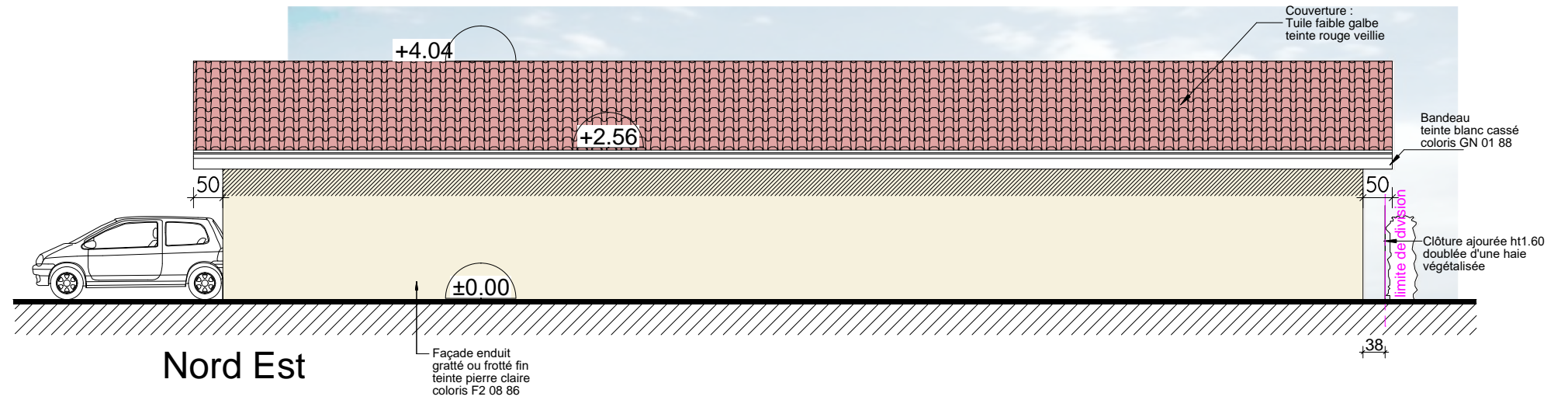




## 6 Garages - 3







Couverture :  
Tuile faible galbe  
teinte rouge vieillie

+4.04

+2.56

50

2.22

+0.00

50

1.06

Clôture ajourée  
ht1.60

limite de propriété

Bandeau  
teinte blanc cassé  
coloris GN 01 88

Façade enduit  
gratté ou frotté fin  
teinte pierre claire  
coloris F2 08 86

Sud Ouest

